



K J's Educational Institute
K J College of Engineering and Management Research

Sr. No.25 & 27, Pisoli At Tal-Haveli, Dist-Pune

7.1.2 Brief report of the Institution has facilities and initiatives for

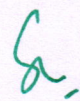
1. **Alternate sources of energy and energy conservation measures**
2. **Management of the various types of degradable and non-degradable waste**
3. **Water conservation**
4. **Green campus initiatives**
5. **Disabled-friendly, barrier free environment**

K J College of Engineering and Management Research, Pune has various facilities and always take initiative for the Environmental Consciousness and Sustainability, also for Divyangjan. These facilities and initiatives are related to alternate source of energy, energy conservation, management of degradable and non-degradable waste, water conservation, green campus, divyangjan etc.

Following are the Brief report of the institution has facilities and initiatives for Environmental Consciousness, Sustainability and Divyangjan.

Sr. No.	Particular	Page No.
1	Brief report of the institution has facilities and initiatives for alternate sources of energy and energy conservation measures	1
2	Brief report of the institution has facilities and initiatives for management of the various types of degradable and non-degradable waste	7
3	Brief report of the institution has facilities and initiatives for water conservation	17
4	Brief report of the institution has facilities and initiatives for green campus	29
5	Brief report of the institution has facilities and initiatives for disabled-friendly, barrier free environment	41




Principal
KJ College of Engineering & Management Research
Sr. No. 25 & 27, Bopdev Ghat.
Kondhawa - Saswad Road, Pune - 411 046



K J's Educational Institute

K J College of Engineering and Management Research

Sr. No.25 & 27, Pisoli At Tal-Haveli, Dist-Pune

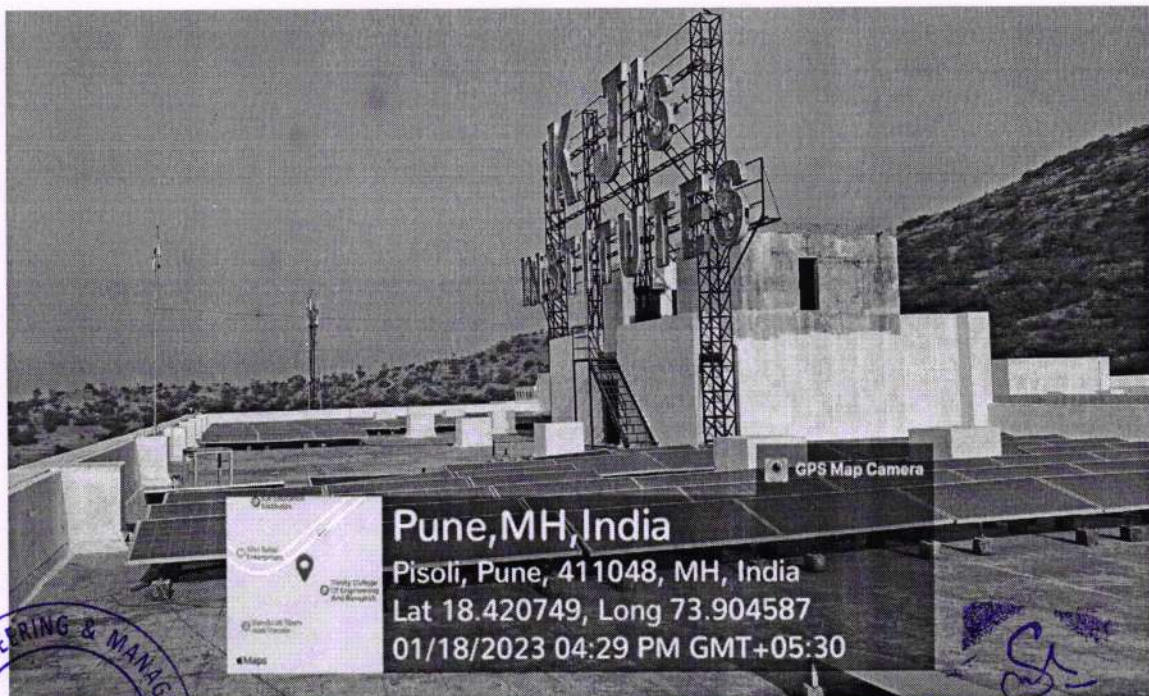
Brief Report of

7.1.2.1 THE INSTITUTION HAS FACILITIES AND INITIATIVES FOR ALTERNATE SOURCES OF ENERGY AND ENERGY CONSERVATION MEASURES

World is facing issues like climate change, rise in sea level, increasing greenhouse gas concentrations. Human activities are responsible for this. The key to tackling this crisis is to end our reliance on energy generated from fossil fuels. To reduce the dependability on fossil fuel renewable energy technology like solar energy already exist today.

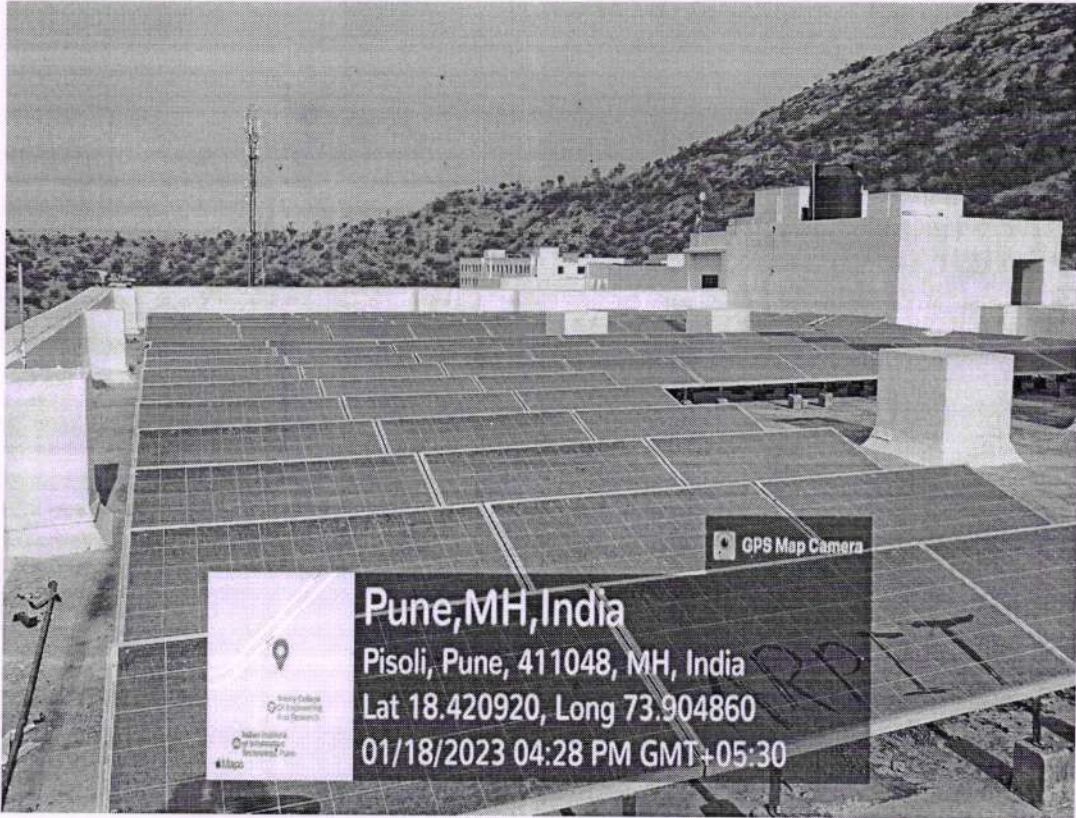
The institute realized the importance of alternate energy sources. Institute promotes use of renewable energy in the campus such as solar energy which is a natural resource of energy that is clean and pollution free. Rooftop solar power generation system installed in the campus. The electricity generated from this system is supplies to main grid of campus and from that main grid K J College of Engineering and Management Research received the electricity.

Renewable energy sources	Capacity of solar power plant	Renewable energy Generated (KWh)	Expected Saving in Rs (Monthly)
Solar Power	114 KWP	5.6 KWh	30000 to 40000

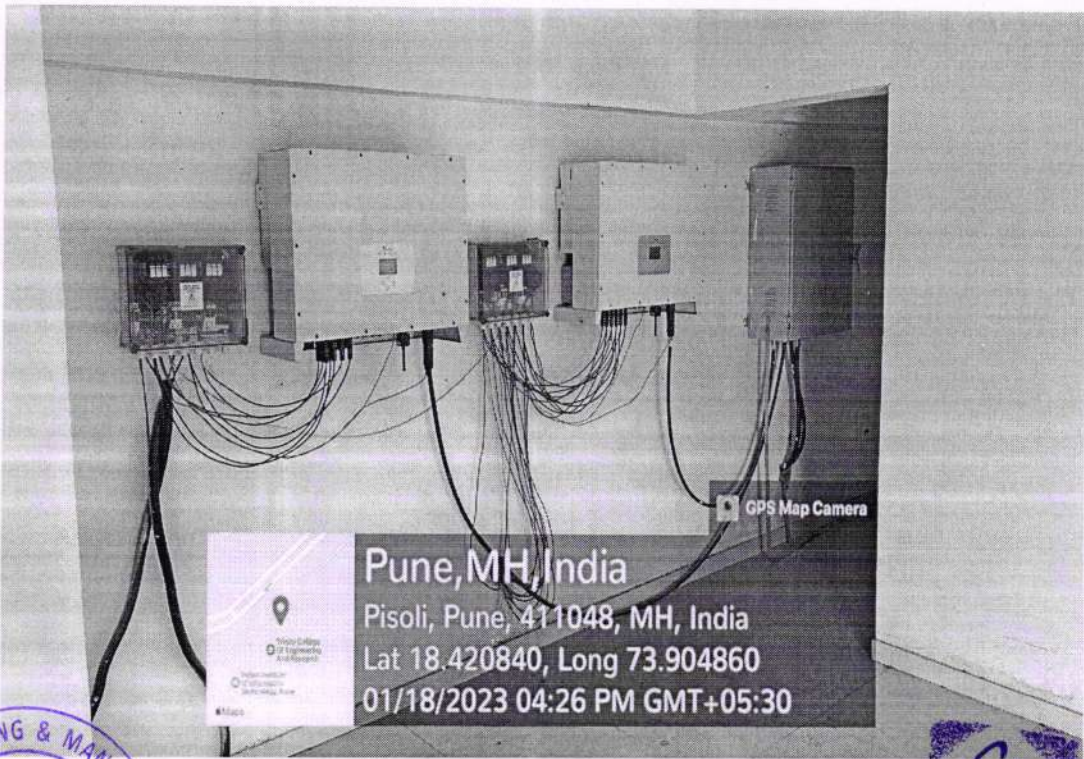


Rooftop solar power generation system

Dr. Suhas S. Khot
 Principal
 K J College of Engineering &
 Management Research
 Sr. No. 25 & 27, Konshwari-Saswad Road
 Pimpri Chinchwad, Pune - 411 004.




Rooftop solar power generation system



Generated solar energy distribute to main grid




Dr. Suhas S. Khot
 Principal
K J College of Engineering & Management Research
 Sr. No. 25 & 27, Kondhwa-Saswad Road
 Pune - 48.

Energy Conservation Measures

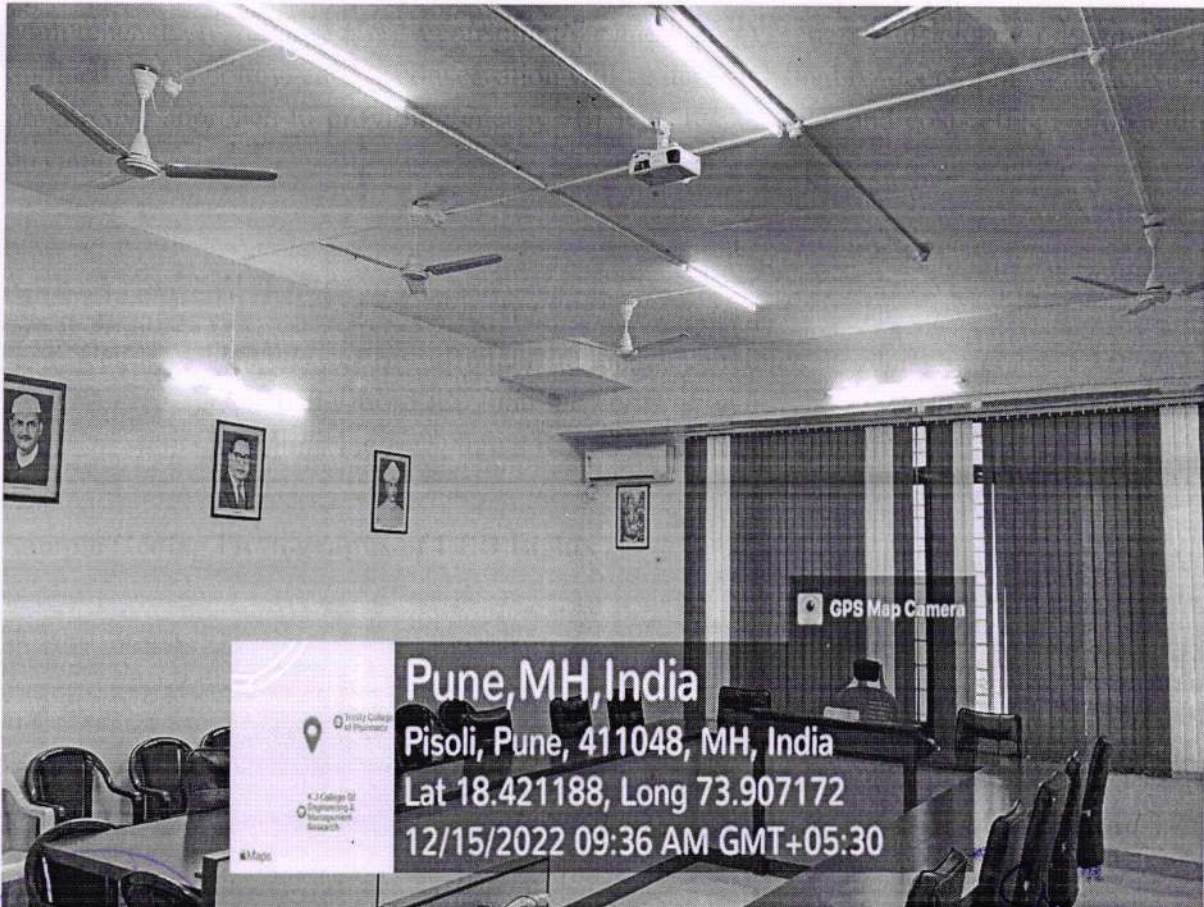
When we limit our energy usage, we lower the impact on the environment. The longer we go without making significant changes, the greater the threat of global warming and climate change become to our daily lives.

To promote environmental consciousness K J College of Engineering and Management Research , has adopted Energy Conservation Policy. The institution aims to realistically and comprehensively reduce energy consumption and improve energy efficiency on campus. As outlined in this policy, energy conservation will be accomplished by developing a proactive and progressive approach to providing energy efficient, responsible, and cost- effective operations on campus.

1. Use of LED Lights

LED is a highly energy efficient lighting technology. It consume at least 75% less energy and having more life than the conventional lights. Looking at these advantages Institute installing the LED lights wherever old tubes/ bulbs need to replace.

Sample Geotag Photographs of LED Lights :



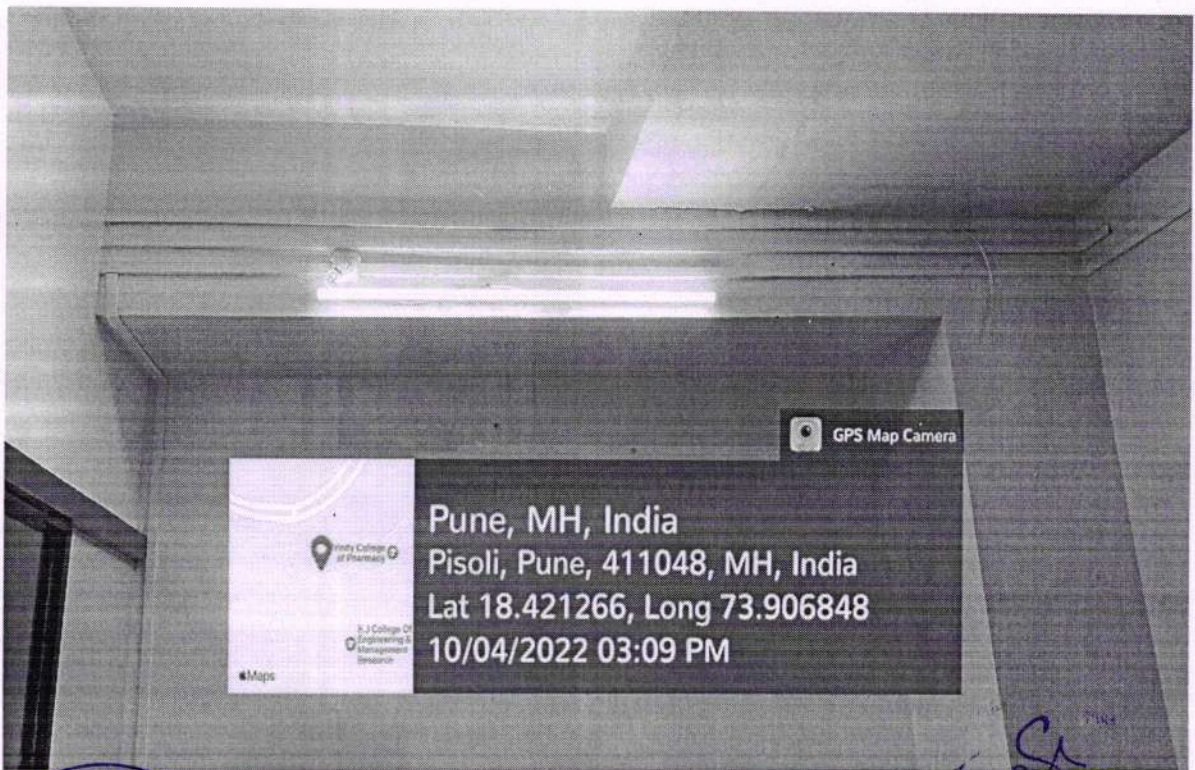
Board Room



Dr. Suhas S. Khot
Principal
K.J. College of Engineering &
Management Research
St. No. 25 & 27, Kondhwa-Saswad Road
Bundlev Ghat, Pune - 48.



Administrative office



Office Superintendent's cabin



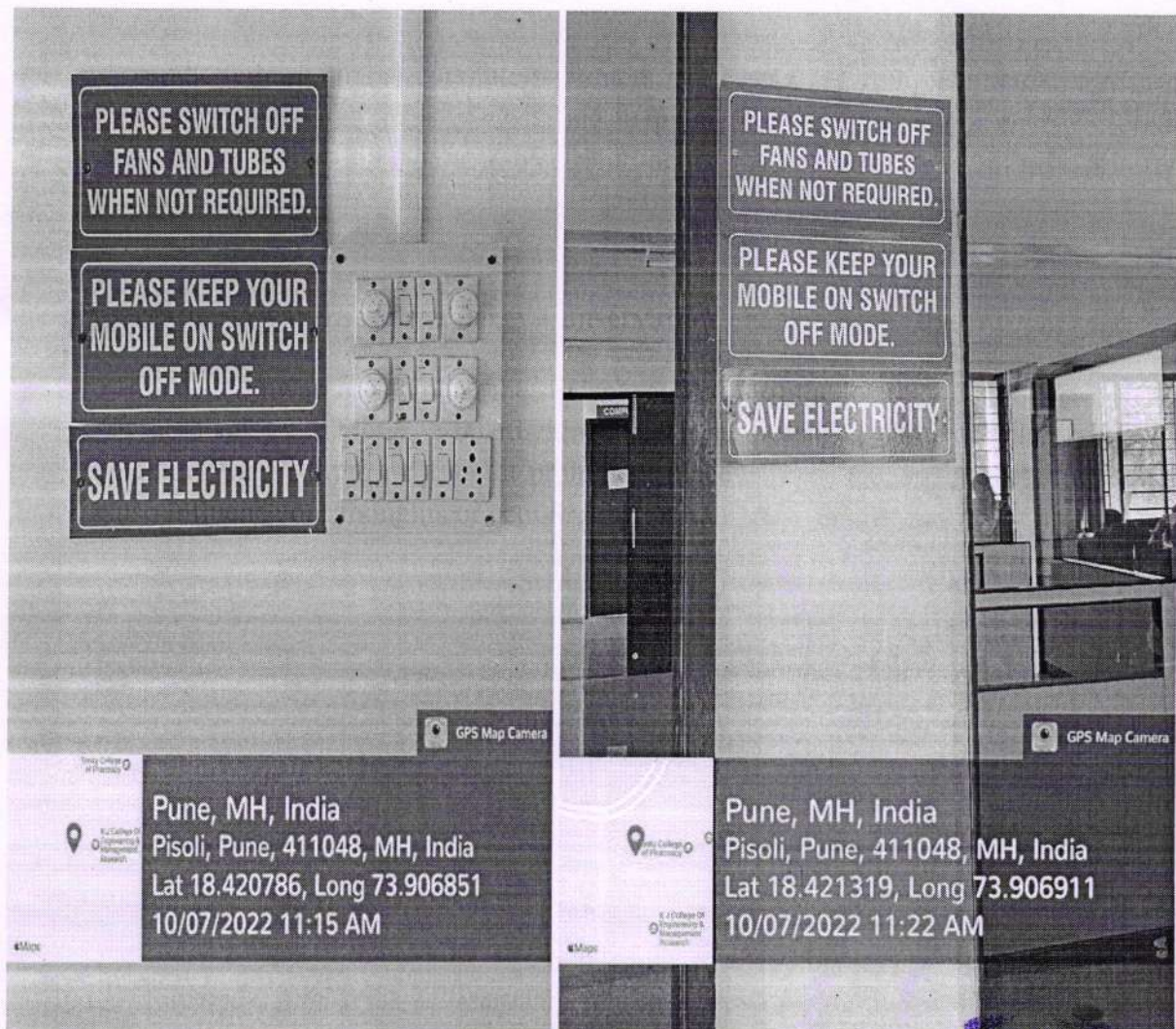
S
Dr. Suhas S. Khot
Principal
**K J College of Engineering &
Management Research**
C. No. 25 & 27, Kondhwa-Saswad Road
Bamburda Ghat, Pune - 46

2. Purchase of Energy Saving Equipment

Institute required many computers, printers, projectors, lab equipment etc. for academic and office purposes. Mostly electronic items are consume the major energy. So while purchasing the power operated electronic items, institute always try to give priority to energy saving Equipment.


3. Creating Awareness for Energy Conservation

To increase awareness among the students and staff of the institute the effective strategy is the display the message boards/Slogans. These message boards are displayed on the walls in the institute building at prominent places. These slogans attracts the attention also influence our thoughts or actions.



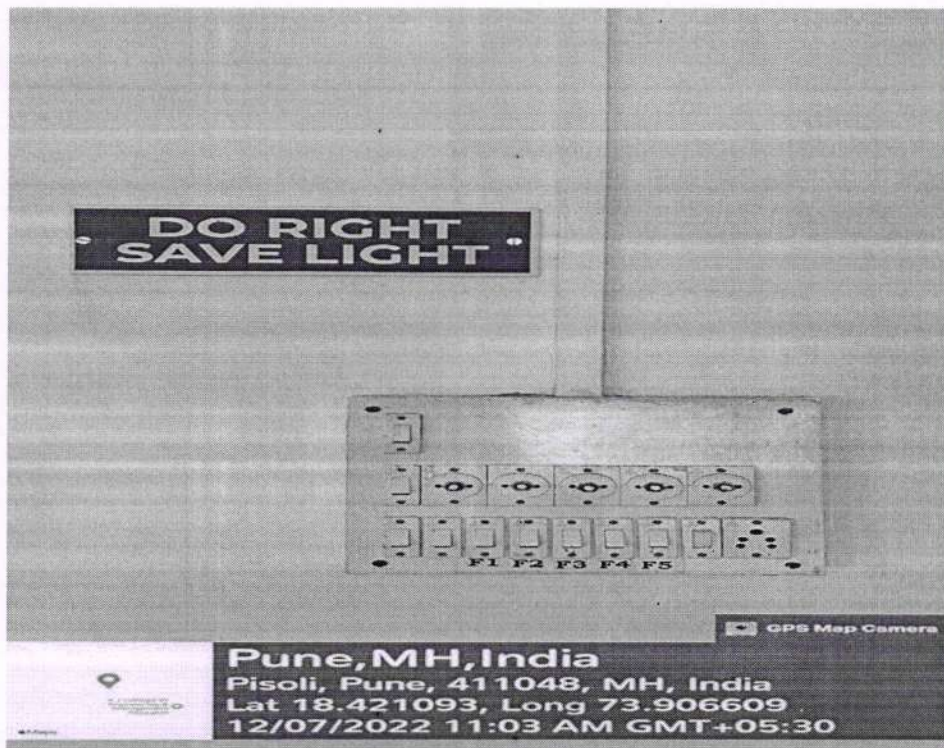
Message Boards are fixed in labs and classrooms




Dr. Suhas S. Khot
Principal
K J College of Engineering & Management Research
No. 25 & 27, Kondhwa-Saswad Road,
Bundar Ghst, Pune - 411 004



Message Boards are fixed in labs and classrooms



Slogan plate to motivate for energy conservation



Principal
(KJCOEMR Pune)



K J's Educational Institute

K J College of Engineering and Management Research

Sr. No.25 & 27, Pisoli At Tal-Haveli, Dist-Pune

Brief Report of
7.1.2.2 THE INSTITUTION HAS FACILITIES AND INITIATIVES FOR
MANAGEMENT OF THE VARIOUS TYPES OF DEGRADABLE AND
NON-DEGRADABLE WASTE

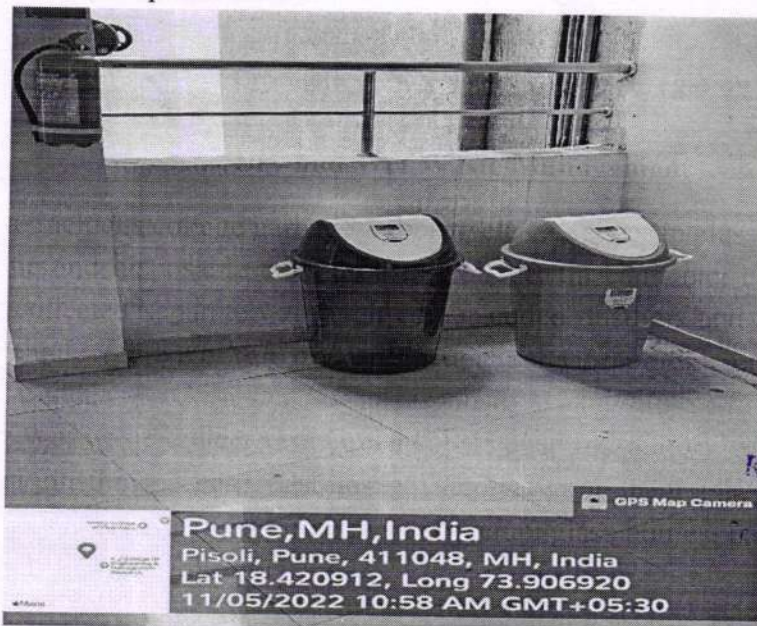
The K J College of Engineering and Management Research has been making very distinctive contributions in the field of environment and sustainability, it shall pay considerable attention to minimizing the production of waste on the campus.

1. Solid Waste Management

The policy is drafted as a guidance document to the faculty, staff and students to behave responsibly in the production of waste, waste segregation, storage, handling and disposal.

a. Dry and Wet Waste Management

Solid waste includes college garbage, rubbish, etc e.g. paper in classrooms and offices, soiled tissue and disposable cups used in College, tin cans, etc. Dry waste and wet waste are collected separately through colour coded dustbins and deposited into the garbage vehicle (garbage van of Pune Municipal Corporation or funded by Adar Poonawalla under the Corporate social responsibility initiative) for further recycling procedure. Wet waste collected in Green colour dustbins and dry waste is collected in blue colour dustbins. These dustbins are kept at prominent places in college and campus. Recyclable waste like iron and steel scrap, glass bottles, paper, wood ,plastic etc. handover to scrap collectors.




Dr. Suhas S. Khot
Principal
K J College of Engineering & Management Research
No. 25 & 27, Kondhwa-Sarwad Road
Pune - 48.

Blue and Green Colour dustbins for Separate collection of dry and wet waste



Blue and Green Colour dustbins for Separate collection of dry and wet waste



Disposal of waste in garbage collection vehicle



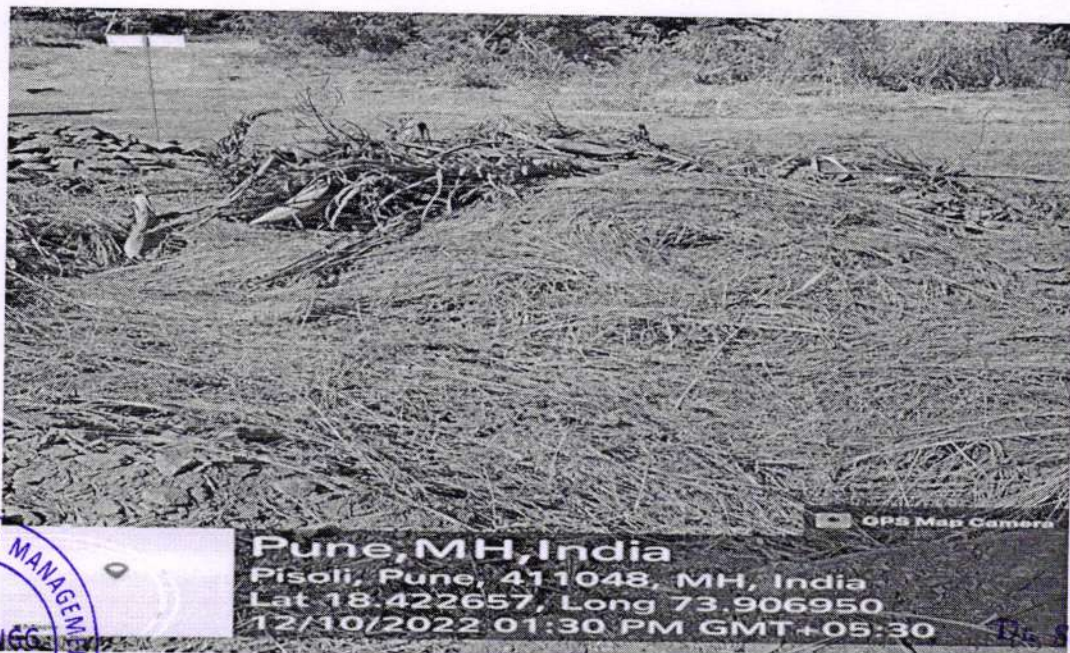
S
 Dr. Suhas S. Khot
 Principal
 K J College of Engineering &
 Management Research
 Sr. No. 25 & 27, Kondhwa-Sarwad Road
 Pimpdev Ghat, Pune - 43

b. Compost Pit

Institute has a compost pit where all tree leaves and organic waste dumps for composting process. Compost is decomposed organic material, such as leaves, grass clippings, and kitchen waste. It provides many essential nutrients for plant growth and therefore is often used as fertilizer. Compost also improves soil structure so that soil can easily hold the correct amount of moisture, nutrients and air. It improves the texture of both clay soils and sandy soils, making either type rich, moisture retentive, and loamy. Institute knows the importance of compost pit. The tree leaves disposed regularly to keep the campus clean.



Compost Pit filled with grass and leaves of trees



Compost Pit filled with grass and leaves of trees



S
Dr. Suhas S. Khot
Principal

K J College of Engineering &
Management Research
& 27, Kondhwa-Saswad Road
Pune-411 004
khotdev @hot. Pune. 43

c. E-waste Management

Used electronics which are marked for reuse, resale, salvage, recycling or disposal are also considered e-waste. Such waste is collected at a separate point.

The hazardous E-waste materials like Cables, Cd's, Lan cables, SMPS, Monitor stands, RAM, mother board are kept with us at the storage place. These items need to collectively disposed e-waste with authorised agency. For this purpose, K J College of Engineering and Management Research has also drawn a MoU with "Silver Steel and Scarp" to ensure reuse, recycle or disposal of this E waste in an appropriate way.



Dr. Suhas Khot, Principal, KJCOEMR signing MoU with Shri. Abdul Ansari, Proprietor of Silver Steel Scrap



Dr. Suhas Khot, Principal, KJCOEMR Pune and Shri. Abdul Ansari, Proprietor of Silver Steel Scrap showing signed MoU



Su
Dr. Suhas S. Khot
Principal
K J College of Engineering & Management Research
Ct. No. 25 & 27, Kondhwa-Saswad Road
Pune - 411 004

2. Liquid Waste Management

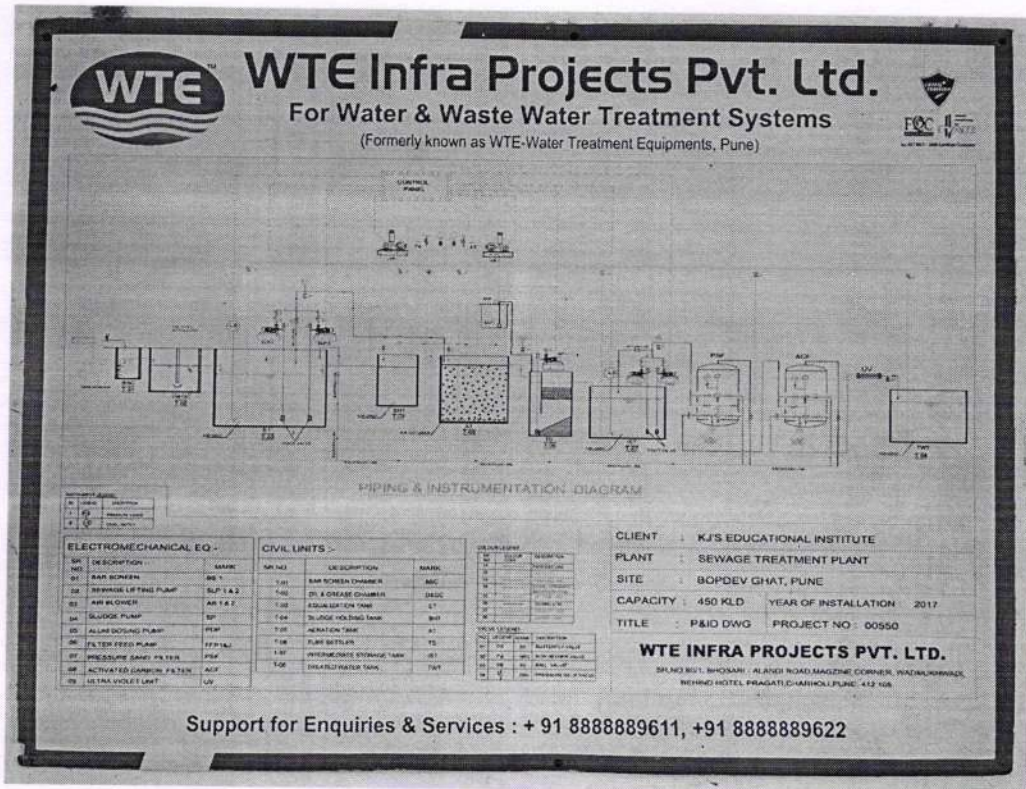
Liquid waste management is a method to prevent the discharge of pollutants into the watercourses, through collection and proper disposal. Used water in washroom directly impact human health and have far reaching consequences when ignored. Wastewater contains elements that are toxic to humans and the ecosystem. The college campus generates tons of sewage every day. Some of this waste, specially from the chemistry labs is so harmful that if it is allowed to leave the neighbourhood area, it can cause various diseases and contamination of land and water. It is easy to eliminate solid waste but it is not so easy to remove chemical and biological contaminants from these wastes, so they can be sent to safe areas. This is done with the help of sewage treatment plants (STP). The institute has a Sewage Treatment Plant (STP), a capacity of 450 KLD (Kilo litres per day) and a proper drainage facility. Full STP operator is appointed for operations and maintenance purpose. Waste water treated in STP further used for plants. Water leakage is prevented by timely maintenance of the taps and water pipes.



Sewage Treatment Plant (STP)




Dr. Suhas S. Khot
Principal
K J College of Engineering &
Management Research
Sr. No. 25 & 27, Kondhwa-Saswad Road
Pune - 411 004



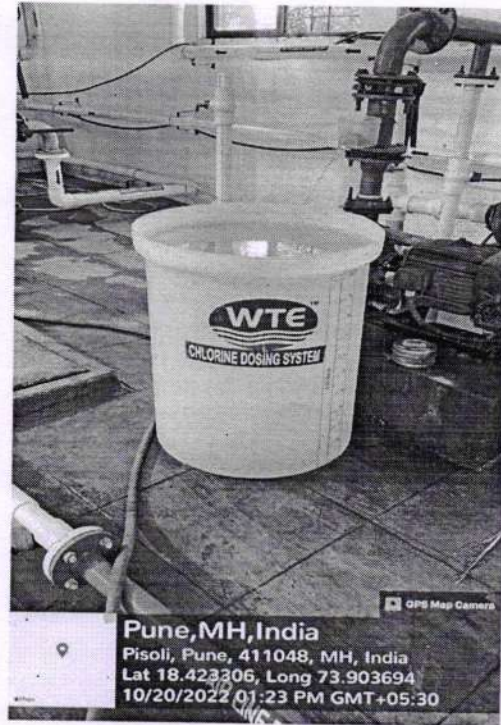
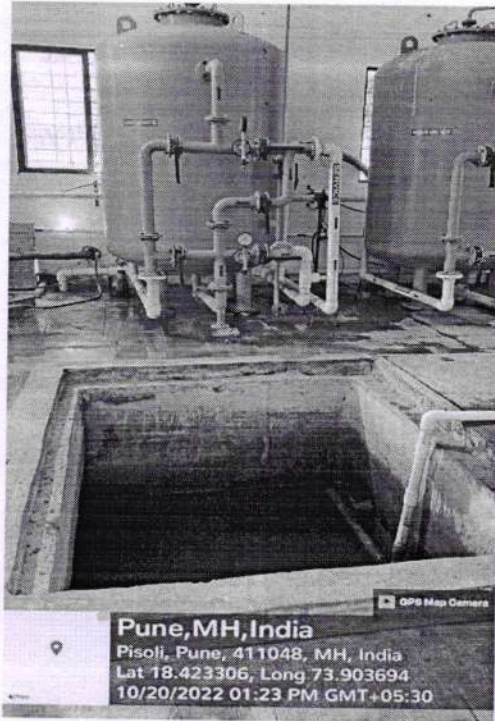
Flow chart of sewage treatment



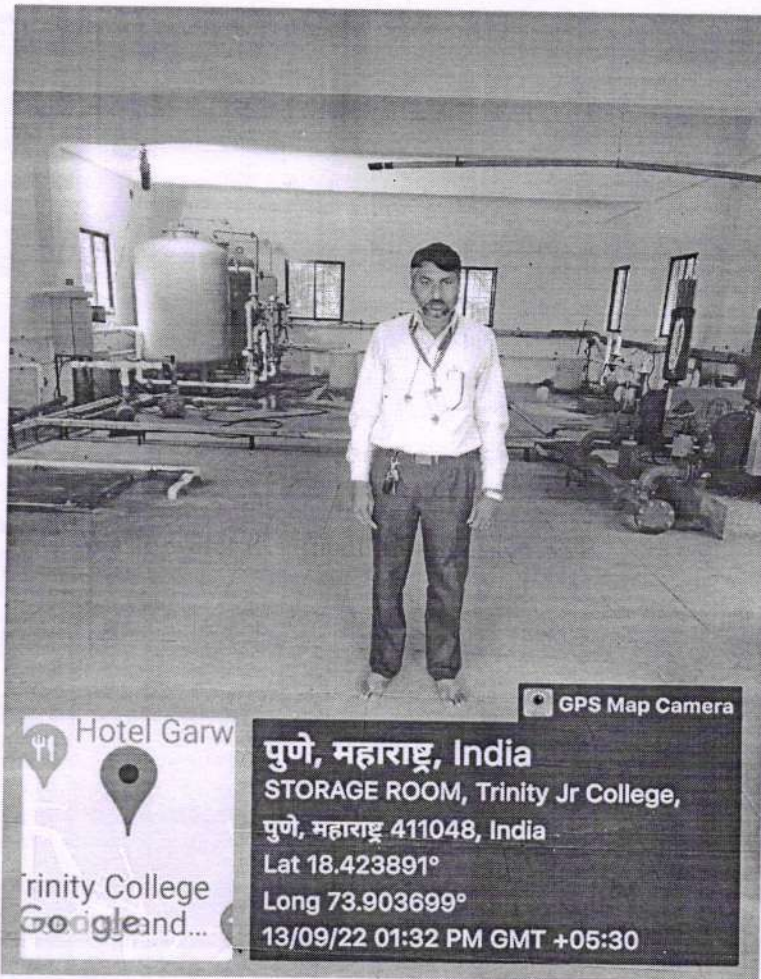
Inside view of STP



Dr. Suhas S. Khot
Principal
K J College of Engineering &
Management Research
Sr. No. 25 & 27, Kondhwa-Saswad Road
Bopdev Ghat, Pune - 411



Waste water treatment in process at STP



Full time appointed STP Operator

Dr. Suhas S. Khot
Principal

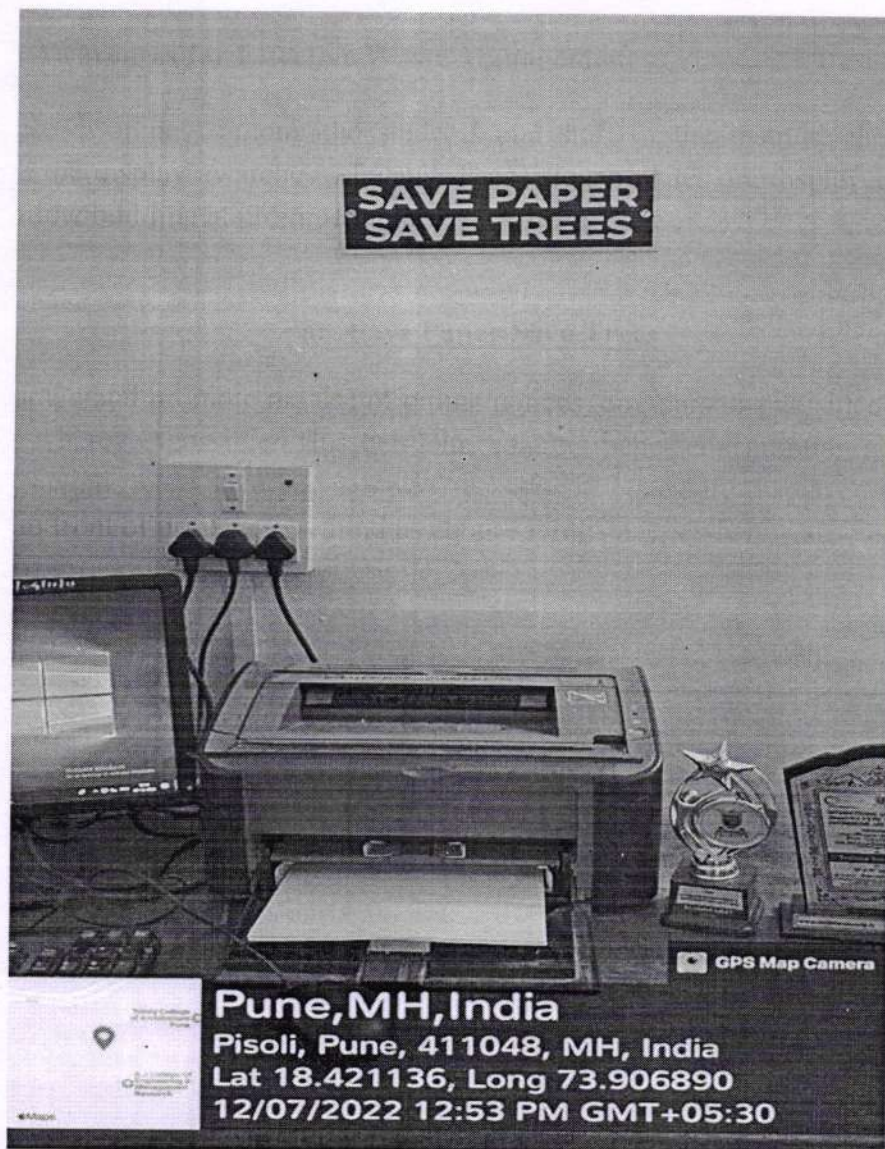
K J College of Engineering &
Management Research
No. 25 & 27, Kondhwa-Saswad Road
Pimpri Chhat. Pune - 411

3. Creating Awareness for Effective Waste Management

To increase awareness among the students and staff of the institute the effective strategy is the display awareness slogans. These slogan plates are displayed on walls in the institute building at prominent places.

a. Save Paper Save Trees

We encourage and promote the use of online notices, circulars or one-sided pages for print-outs wherever possible. This helps in reducing paper consumption and in turn results in saving trees. Save Paper Save Trees slogan plates are displayed mostly on the walls in front of printers to remind us about saving papers when we use printers.



Save Paper Save Trees slogan plate




Dr. Suhas S. Khot
Principal
K J College of Engineering &
Management Research
Sr. No. 25 & 27, Kondhwa-Saswad Road
Pune - 48

b. Reduce Reuse Recycle and Say “No” to Plastic

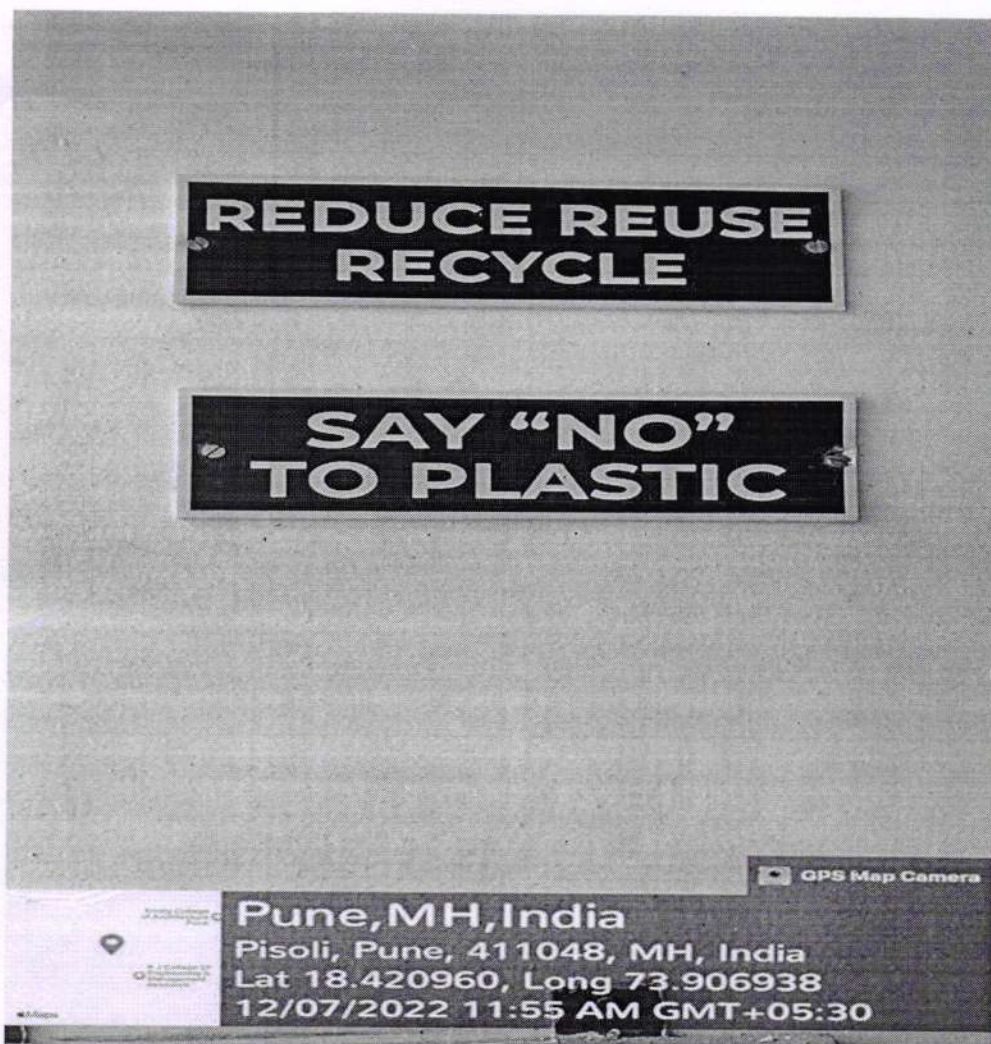
Non recyclable plastic is banned in campus. Institute creates awareness for the no use or minimum use of recyclable plastic also motivate the staff and students through slogan plates for reduce the waste, think about reuse of waste before dumping and recycle the waste. Mostly these slogan plates are displayed on the walls near the dustbins to think before dump the waste.



Reduce Reuse Recycle and Say “No” to Plastic slogan plates neat waste bins




Dr. Suhas S. Khot
Principal
K J College of Engineering &
Management Research
No. 25 & 27, Kondhwa-Saswad Road
Bopdev Chai, Pune - 48.



Reduce Reuse Recycle and Say "No" to Plastic slogan plates

Principal
(KJCOEMR Pune)





Brief Report of

7.1.2.3 THE INSTITUTION HAS FACILITIES AND INITIATIVES FOR WATER CONSERVATION

Water is a basic resource for our life and one of the most essential components of our planet Earth. With the rapid growth in industrialization, modernization, urbanization, growing population and agriculture the demand for water has been pushed up manifolds but the freshwater resources are in limited quantity. With the receding supply of fresh water and enhancing demand for water, there is a need to conserve and manage water for sustainable development. Our Institute understands the importance of water Conservation and for that institute framed water conservation policies and strategies to manage water effectively and efficiently.

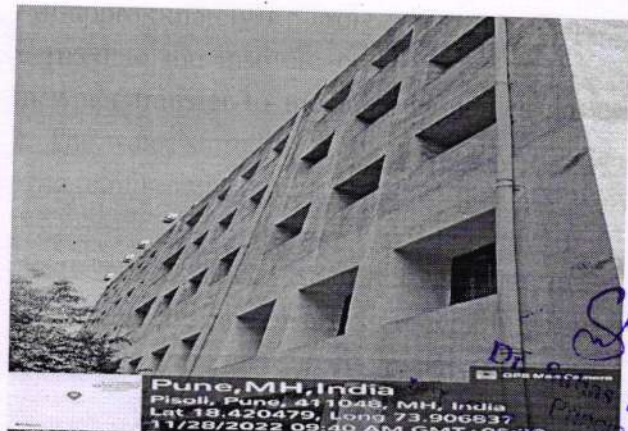
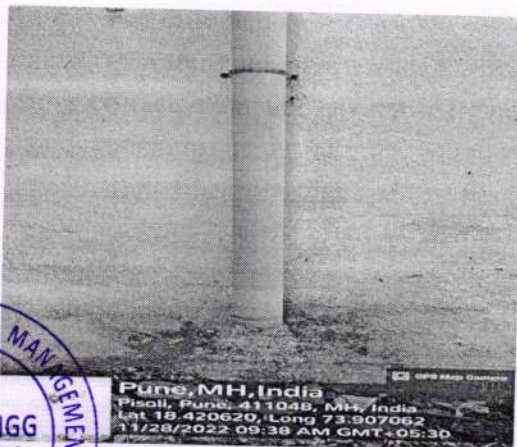
Available Facilities in the Campus And Initiatives

A) Rain/Storm Water Management

The campus of K J College of Engineering and Management Research is surrounded by hills. The institute has taken the advantage of this and created an infrastructure in the campus to collect and store the rain water falls on hills and in the campus. Institute created two water bodies having combined water storage capacity of approximately 1.5 crore litres, one open well and elevated water tank. Down take lines are fixed to the institute building to transfer the rainwater collected on the terrace. All the rain water transfer to those water bodies through various channels by using natural ground slope. The water stored in the water bodies transfers to the open well and from that open well as per the requirement it transfers to an elevated water tank having a water storage capacity of 10 lakhs litres . From that tank water is transferred to the institute building for maintenance and domestic needs. This system allows to storing the rain water as well as recharge of the ground water. Staff of the construction department takes care of maintenance of the water bodies. Dedicated staff appointed for the maintenance of this distribution system.

1. Down take lines

Down take lines fixed to institute building to collect the rain water from the roof and transfer to the channel which leads to rain/storm water the water bodies.



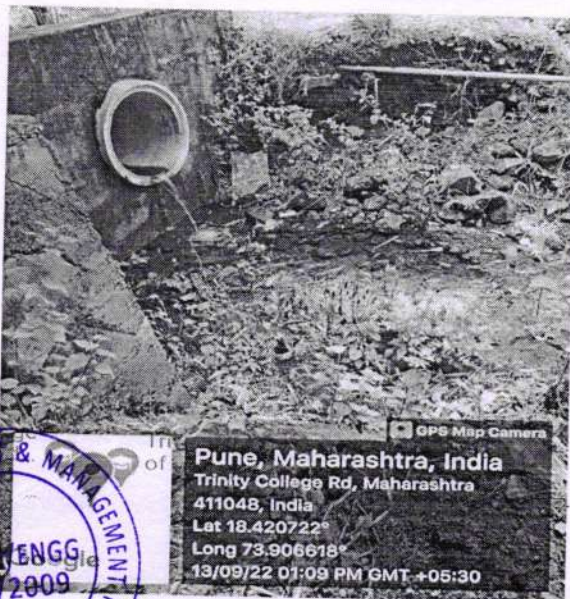
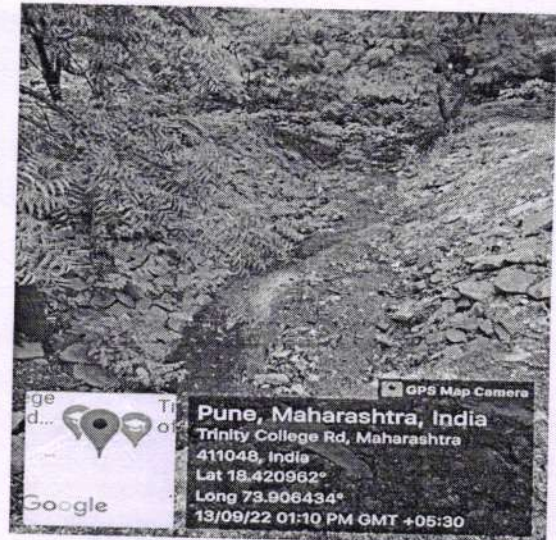
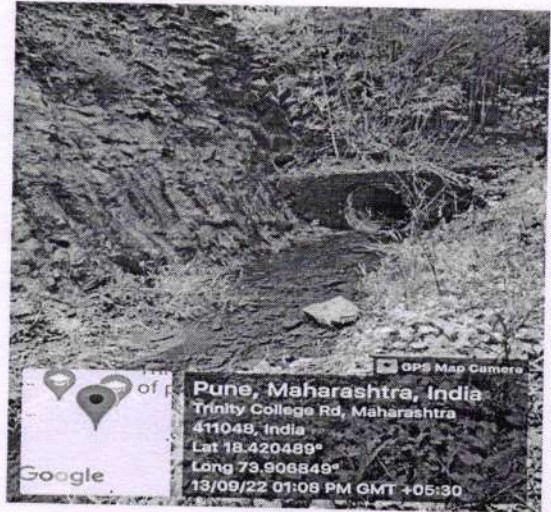
Down take lines



S. Khot
Principal
K J College of Engineering & Management Research
Sr. No. 25 & 27, Kondhwa-Saswad Rd,
Tal. Haveli, Dist. Pune

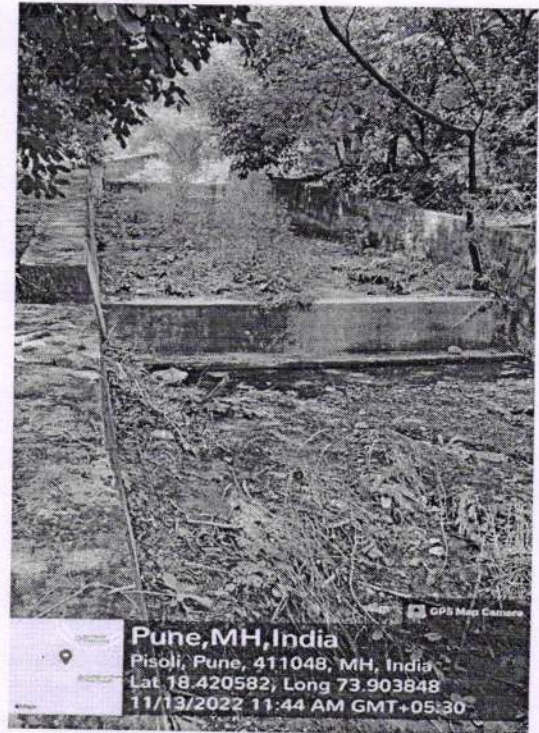
2. Channels to collect rain/storm water

These channels are constructed to collect all the rain water falls on hills and in the campus. All these channels transfer rain/storm water to the water bodies. These channels are in the form of excavated trench, RCC (Reinforced Cement Concrete) pipes, Rock pitched open channels and RCC channels.



Channels to collect and transfer the rain/storm water

S. Khot
Engineering & Management Research
25 & 27, Kondhwa-Saswad Road
Borivli Ghat, Pune - 48.



RCC Channel to divert the rain/storm water into water bodies and slow down the flow of water by gradual slope

3. Water Bodies

Two water bodies are created in the form of a lake by excavation and construction of earthen bunds. These water bodies received all the rain/storm water through various channels. These water bodies are connected to an open well through a pipe system for further distribution of stored water. These water bodies help to recharge the ground water through the natural percolation of stored water.



Earthen bunds constructed to create the water bodies



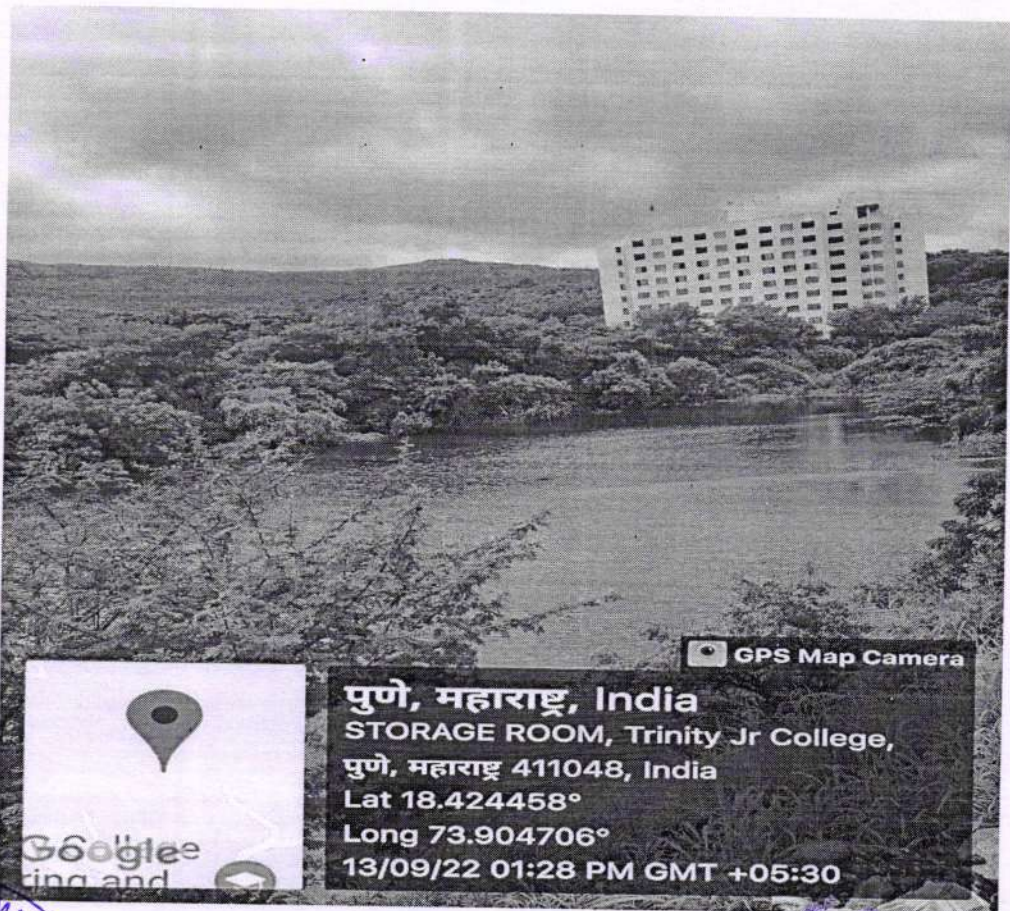
S. Khot
Principal
Trinity Jr College of Engineering & Management Research
Sr. No. 25 & 27, Kondhwa-Saswad Road,
Bopdev Ghat, Pune - 48. 19



GPS Map Camera

Pune, Maharashtra, India
 Trinity College Rd, Maharashtra 411048, India
 Lat 18.42238°
 Long 73.907963°
 13/09/22 02:02 PM GMT +05:30

Water Body 1



GPS Map Camera

पुणे, महाराष्ट्र, India
 STORAGE ROOM, Trinity Jr College,
 पुणे, महाराष्ट्र 411048, India
 Lat 18.424458°
 Long 73.904706°
 13/09/22 01:28 PM GMT +05:30

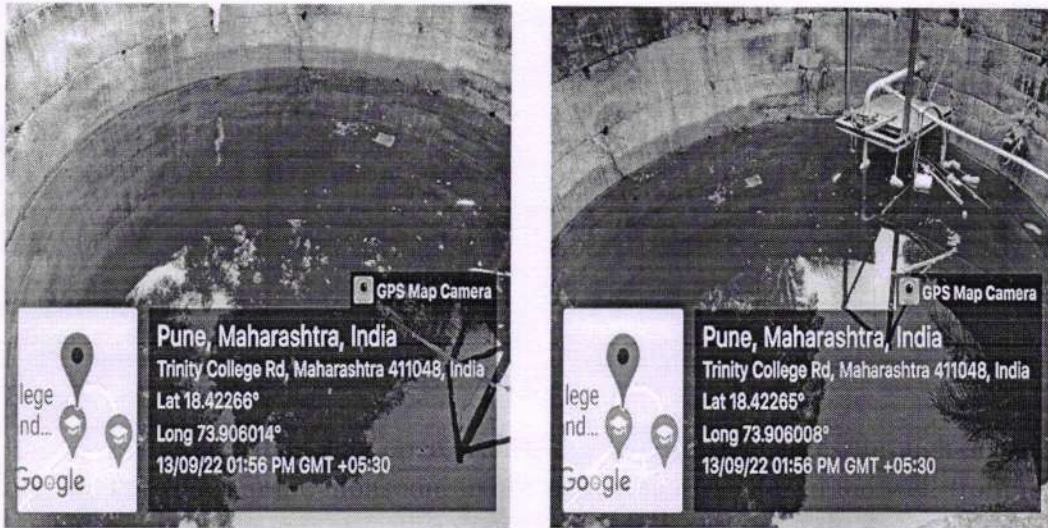
Water Body 2



Dr. Suhas S. Khot
 Principal
 K J College of Engineering &
 Management Research
 Sr. No. 25 & 27, Kondhwa-Saswad Road
 Bopdev Ghat, Pune - 48.

4. Open well

In the Institute campus, one open well is available. It recharges through surface water and ground water in the monsoon. In summer, water transfer to the well from the water bodies through pipeline for further distribution.



Open well

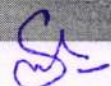
5. Water Tank

One water tank is constructed at a high altitude having storage capacity of 10 lakh liters. From that water is supplied to the institute building for domestic use. This water tank is connected to the open well through the pipeline. As per requirement water transferred to this tank from the open well.



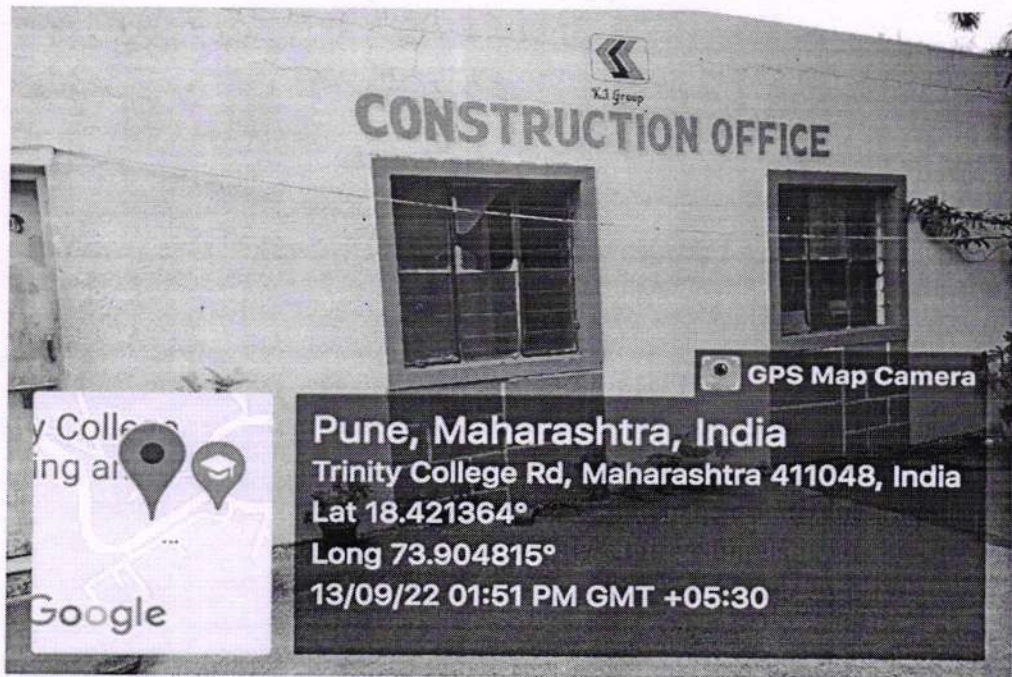
Water Tank




Dr. Suhas S. Khot
Principal
K J College of Engineering &
Management Research
Sr. No. 25 & 27, Kondhwa-Saswad Road
Indev Ghat, Pune - 411 008

6. Construction and Maintenance Department

The staff of construction department takes care of maintenance of water bodies and channels. Dedicated staff are appointed for the maintenance and functioning of water distribution system and sewage water system of the entire campus.




Construction office in the Campus



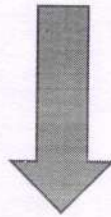
Storeroom in the Campus



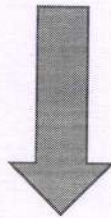

Dr. Suhas S. Khot
Principal
K J College of Engineering &
Management Research
Sr. No. 25 & 27, Kondhwa-Saswad Road
Bopdev Ghat Pune - 48.

Flow chart of rain/storm water distribution

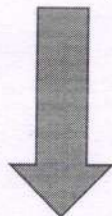
Water Bodies



Open well




Elevated Water Tank



Institute Building and Campus




Dr. Suhas S. Khot
Principal
K J College of Engineering &
Management Research
Sr. No. 25 & 27, Kondhwa-Saswad Road
Bundev Chat, Pune - 411

B) Waste Water Recycling

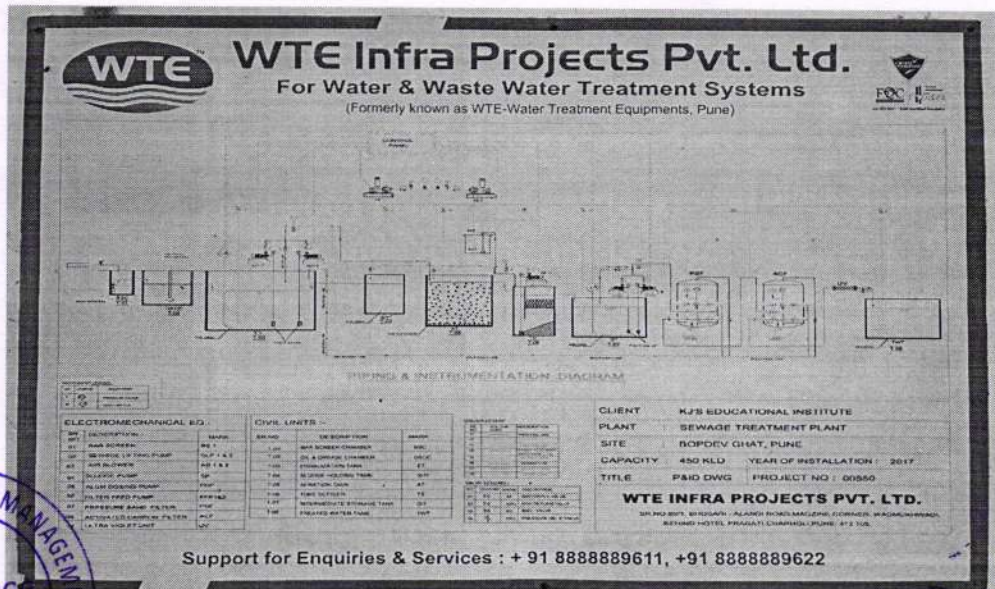
Wastewater reuse or water recycling is the use of treated wastewater for a beneficial purpose. One of the key advantages of recycling water is to protect water resources by reducing water pollution discharges and reduce the need of fresh water. Sewage Treatment Plant (STP) is the best solution to recycle the waste water.

1. Sewage Treatment Plant (STP)

The institute is having Sewage Treatment Plant (STP) to recycle the waste water. The capacity of STP is 450 KLD. The water used at toilets, bathrooms, laboratories, wash basins, hostel, canteen etc transfers to the STP. All this used water gets treated in the STP. That treated water uses for gardening and watering the plants.



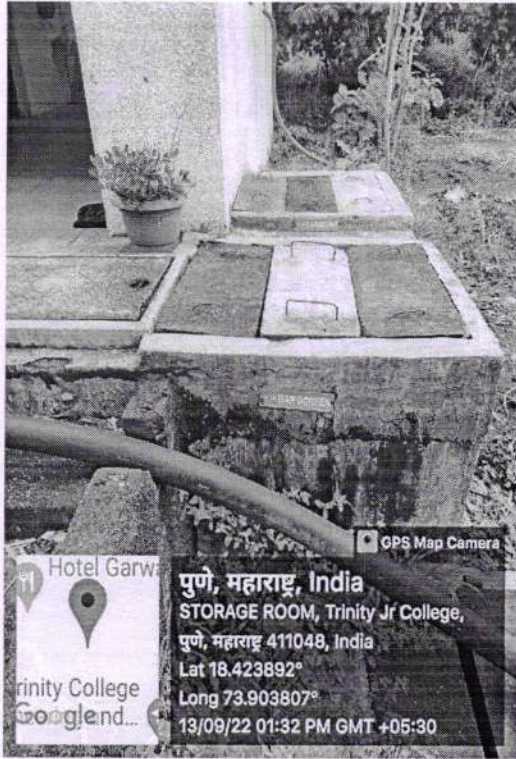
Sewage Treatment Plant (STP)



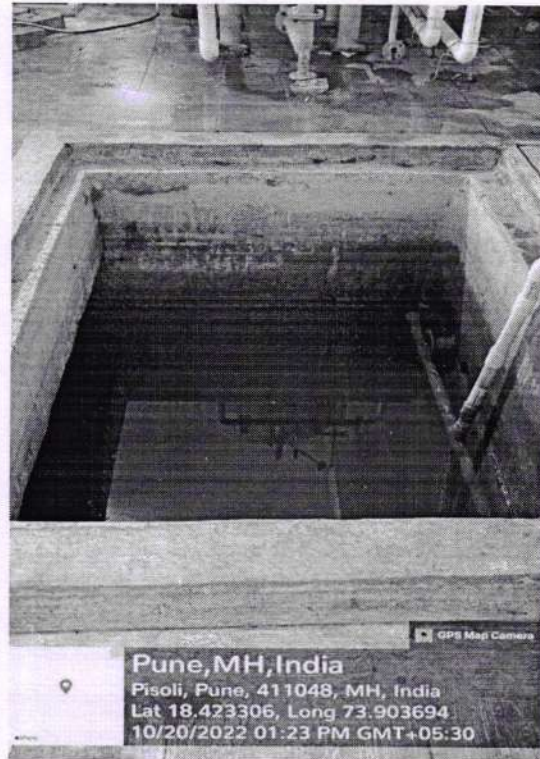
Flow chart of sewage treatment



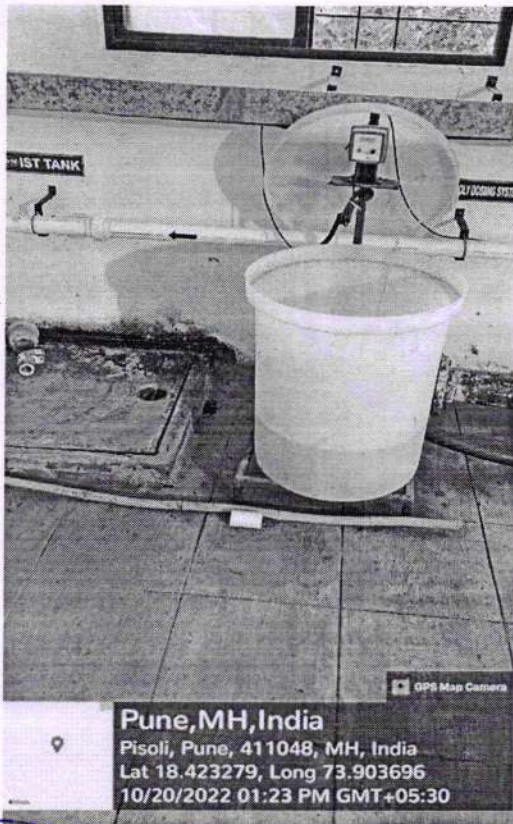
Dr. Suhas S. Khot
Principal
K J College of Engineering & Management Research
Sr. No. 25 & 27, Kondhwa-Saswad R24
Erodev Ghat, Pune - 48.



Bar screen



Treatment tank




Dosing system



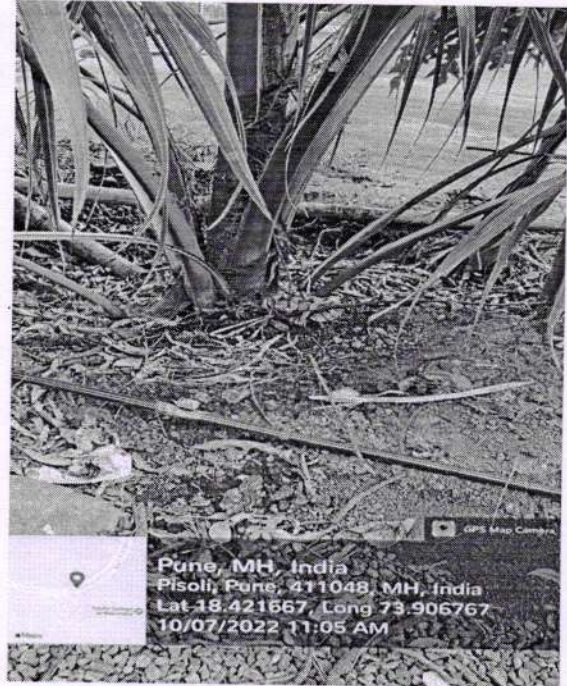
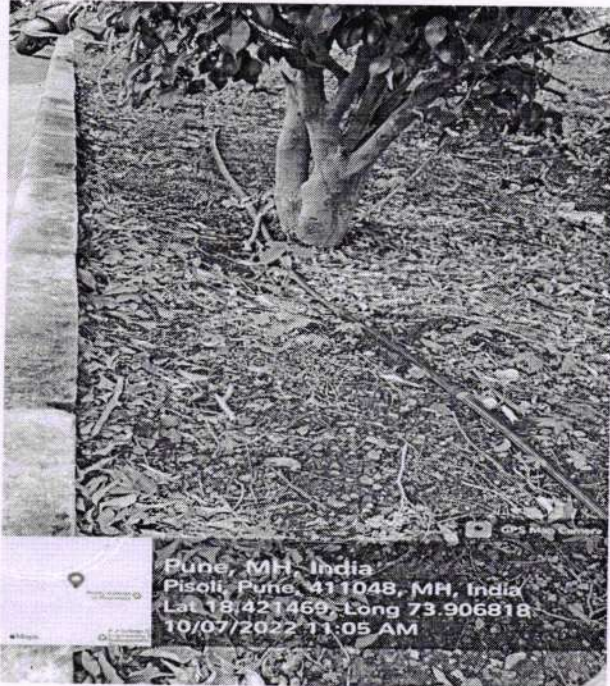
Control panel



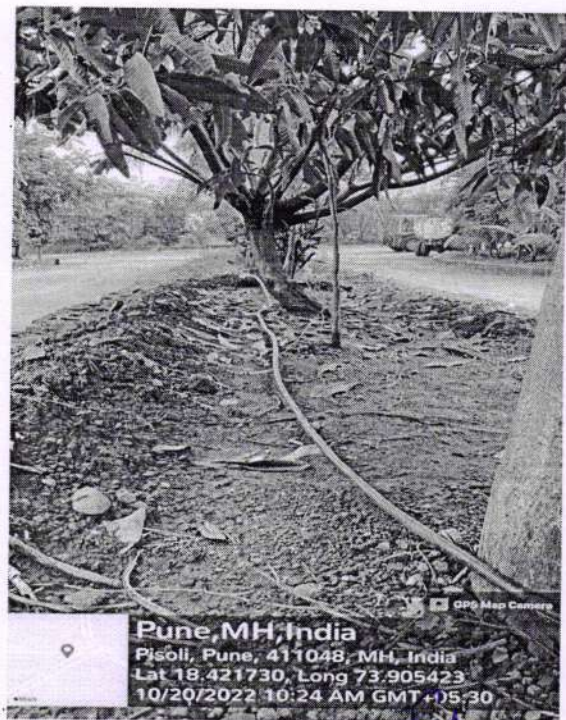
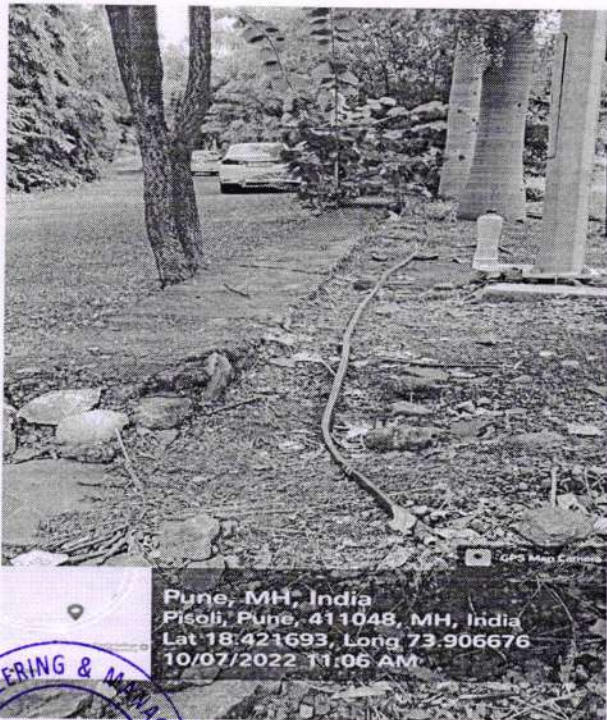

 Dr. Suhas S. Khot.
 Principal
 K J College of Engineering &
 Management Research
 C/ No. 25 & 27, Kondhwa-Saswad Road
 Shivdov Ghat, Pune - 48.

C) Drip Irrigation System

Drip irrigation involves placing tubing with emitters on the ground along side the plants. The emitters slowly drip water into the soil at the root zone. Because moisture levels are kept at an optimal range, plant productivity and quality improves. Drip Irrigation System saves time, human efforts and water. Due to all these advantages, the institute installed the drip irrigation system in the campus for watering the garden and trees/plants.



Drip irrigation system at campus



Drip irrigation system at campus



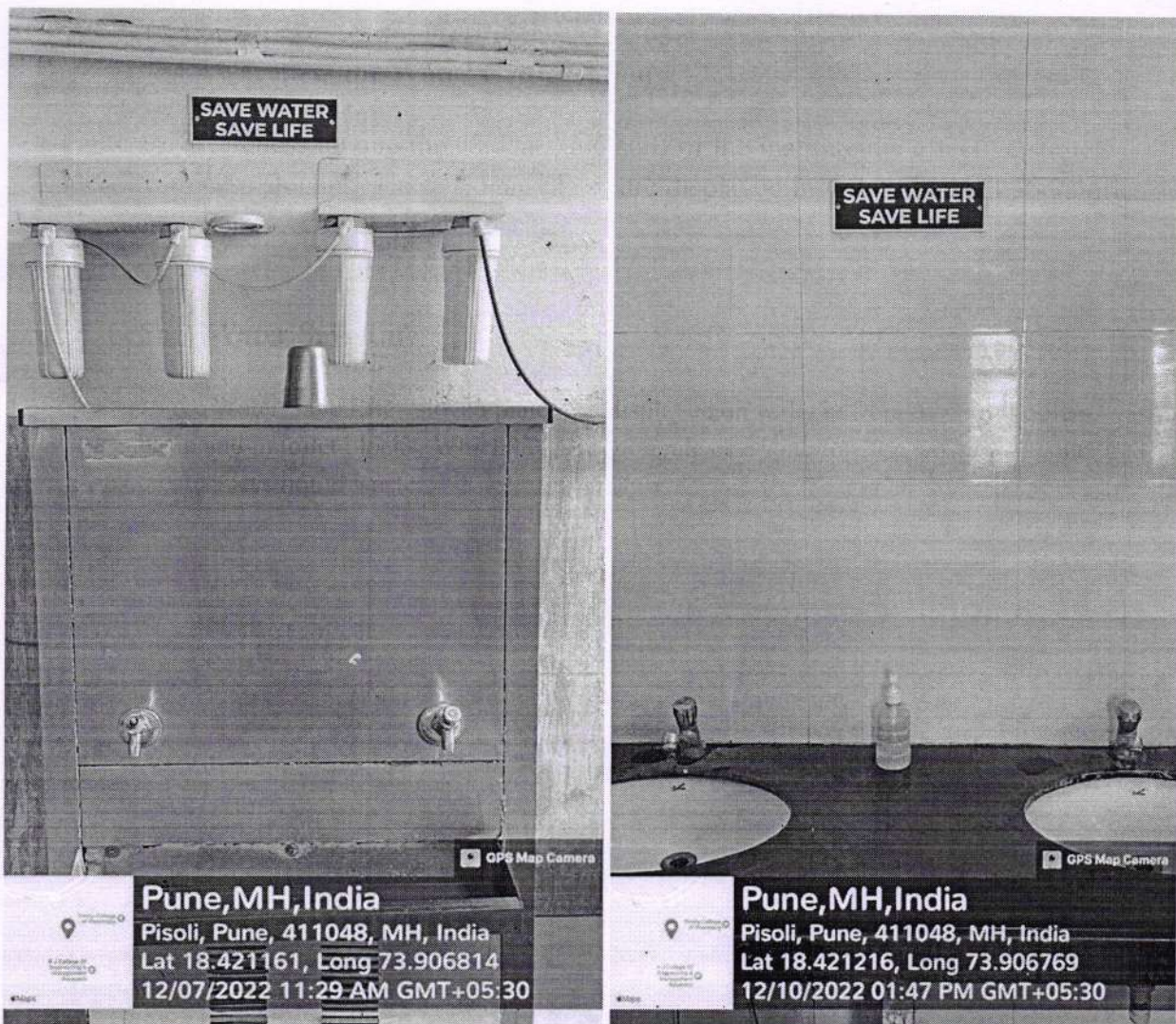
Dr. Suhas S. Khot
Principal
K J College of Engineering &
Management Research
Sr. No. 25 & 27, Kondhwa-Saswad Road
Pondew Ghat, Pune - 48.

D) Creating Awareness for Water Conservation

To increase awareness among the students and staff of the institute the effective strategy is the display awareness slogans. These slogan plates are displayed in toilet blocks, Laboratories and near water coolers.

1. Save Water Save Life

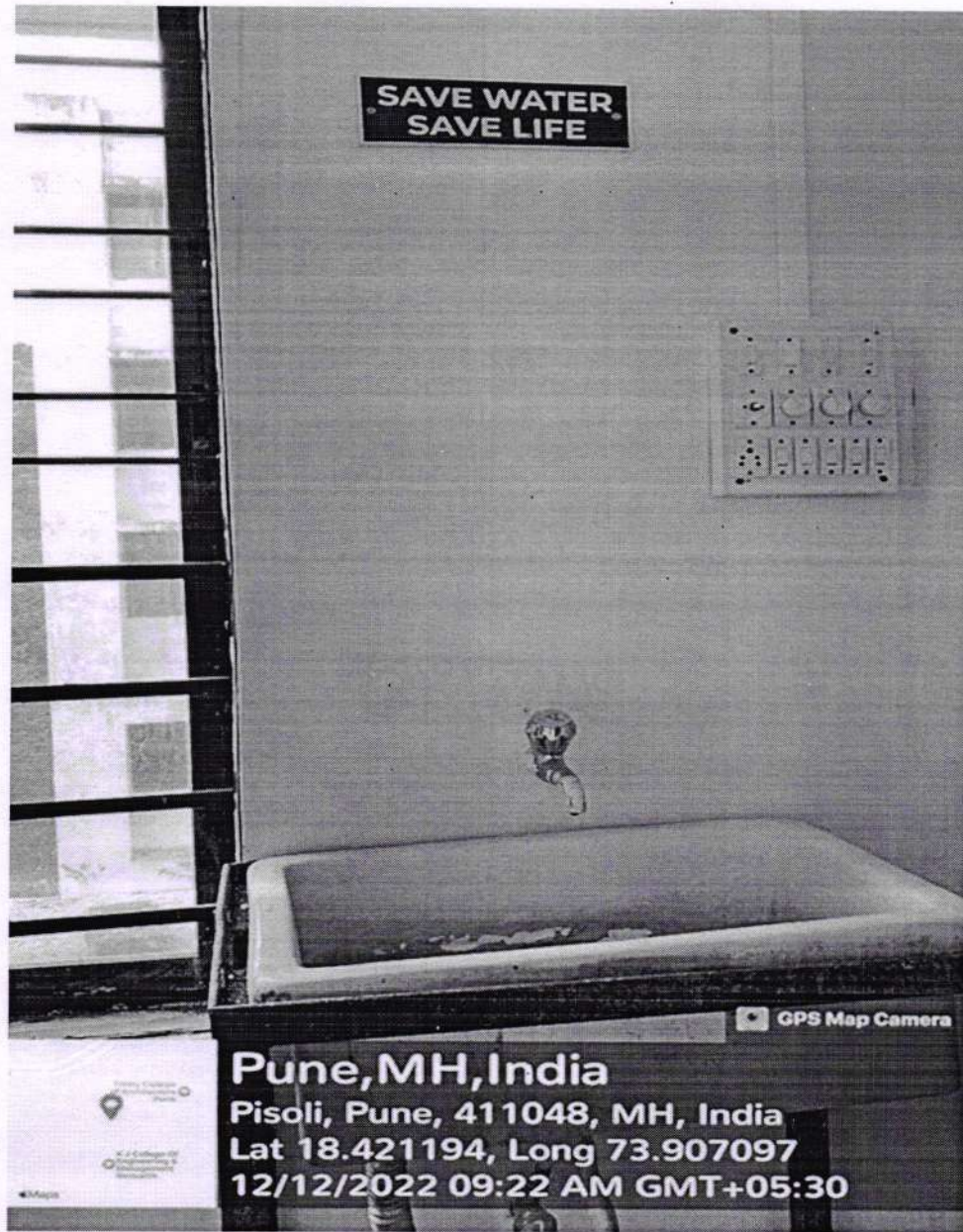
“Save Water Save Life” slogan plates are displayed on walls in front of water coolers, wash basin and in toilet blocks. Which helps to motivate everyone for stop wasting of water and create a less liquid waste.



Save Water Save Life slogan plate at water cooler and in toilet block




Dr. Suhas S. Khot
Principal
K J College of Engineering &
Management Research
Sr. No. 25 & 27, Kondhwa-Saswad Road
E. Jay Chet. Pune - 41.



Save Water Save Life slogan plate in laboratory above tap

Principal
(KJCOEMR Pune)





K J's Educational Institute

K J College of Engineering and Management Research

Sr. No.25 & 27, Pisoli At Tal-Haveli, Dist-Pune

Brief Report of
7.1.2.4 THE INSTITUTION HAS FACILITIES AND INITIATIVES FOR GREEN CAMPUS

A Green Campus means following the environmental friendly practices along with education to promote sustainable and eco-friendly practices in the campus. Green campus is sweeping away wasteful inefficiencies and using conventional sources of energy for its daily power needs, correct disposal handling, purchase of environment friendly supplies and effective recycling program.

Major Facilities and Initiative for Green campus

1. Policy Drafting

KJCOEMR drafted policies that are guided for the green campus initiatives. These policies are related to green campus initiatives, management of degradable and non-degradable waste, environment and energy usage, energy and water conservation etc.

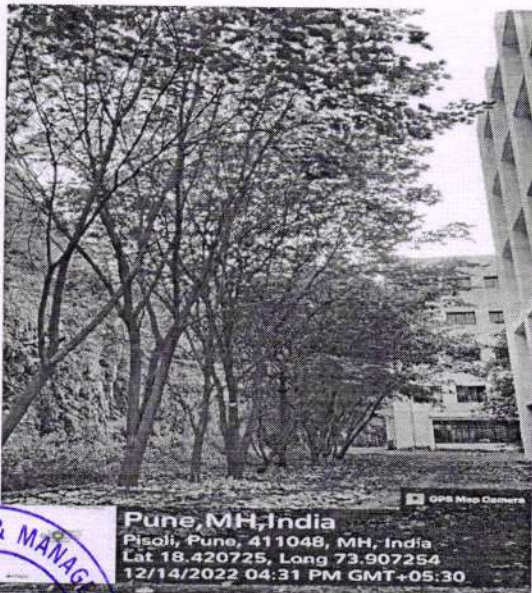
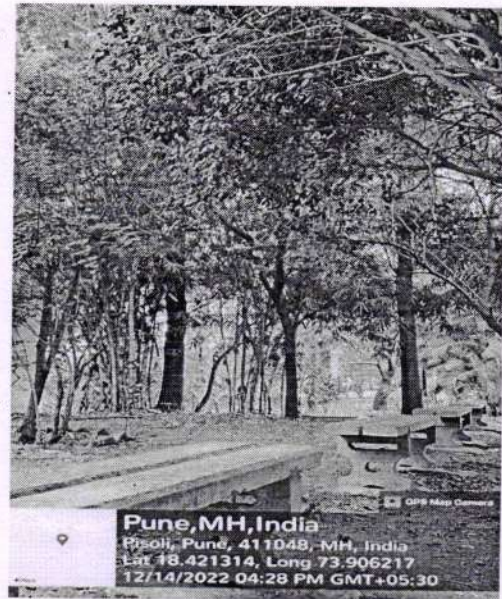
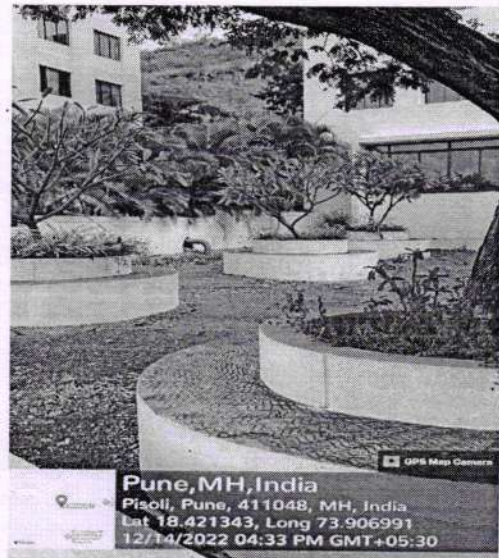
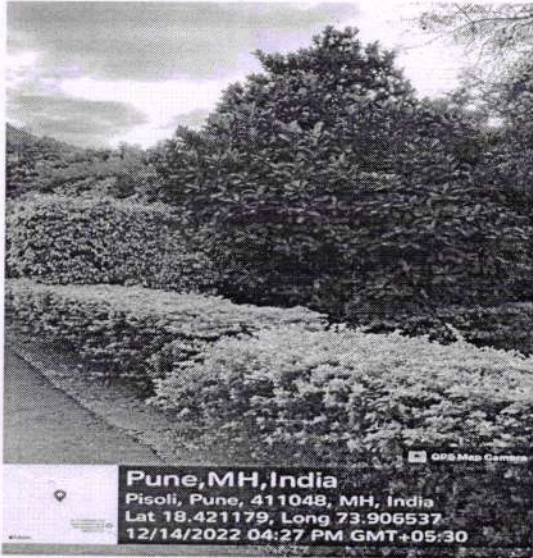
2. Landscaping

Landscaping allows different species of plants to grow and nurture. It reduces Air Pollutants – Plants improve the air quality in campus by capturing dust, smoke particles & other pollutants, and it produces oxygen. As per green practices, KJCOEMR planting more trees and plants in campus and outside the campus.



Landscaping with trees and plants at entrance of KJCOEMR

Dr. Suhas S. Khot
Principal
K J College of Engineering & Management Research
No. 25 & 27, Kondhwa-Saswad Road,
Tandev Ghat, Pune - 48

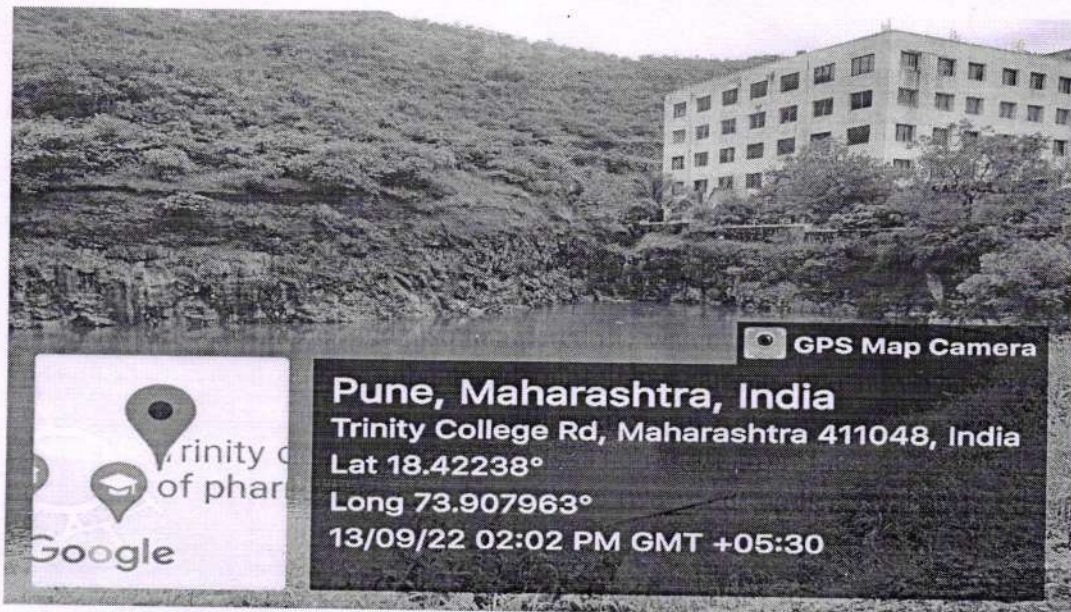


Landscaping with trees and plants near institute building

Dr. Suhas S. Khot
 Principal
K J College of Engineering & Management Research
 Sr. No. 25 & 27, Kondhwa-Saswad Road
 Fardav Ghat, Pune - 48

3. Rain/Storm Water Management

Water scarcity is a serious problem throughout the world. Urbanization, industrial development & increase in the agricultural fields resulted in the overuse of groundwater & surface water resources and also hampered the water quality. Increased water demand can not be fulfilled due to unbalanced rainfall. In campus two new water bodies are created in the form of the lakes to store the rain/storm water by using topography of the campus and construction of earthen bunds. The runoff from the terrace of the college building and campus is channelised into these two water bodies. Water stored in these water bodies uses for domestic needs.

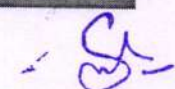


Water body 1



Water body 2




Dr. Suhas S. Khot
Principal

K J College of Engineering &
Management Research

Sr. No. 25 & 27, Kondhwa-Saswad Road
K J Ghat Pune - 48

4. Reuse of Waste Water and Conserve the Fresh Water by Using Sewage Treatment Plant (STP)

In KJCOEMR Campus, the waste water is treated in STP installed in the campus. Through the treatment of wastewater, the amount of waste that is usually released into the environment is reduced thus improving the environment's health. By doing so, we reduce the health risks associated with environmental pollution and reduce the water loss induced through water pollution. Treated waste/sewage water used for gardening and watering the trees/plants.



Sewage Treatment Plant (STP)

5. MoU for E-Waste

KJCOEMR has drawn MoU with “Silver Steel and Scarp” by keeping a view to reduce pollution due to E-waste and lower waste products in landfills. It ensured collected E-waste in campus is reuse, recycle or dispose of in an appropriate way which helps the campus's overall health and keeps the air, water and land clean.



Dr. Suhas Khot, Principal, KJCOEMR Pune and Shri. Abdul Ansari, Proprietor of Silver Steel Scrap showing signed MoU



Dr. Suhas S. Khot
Principal
K J College of Engineering &
Management Research
No. 25 & 27, Kondhwa-Saswad Road,
Bhosdev Ghat Pune - 48.

6. **Use of LED, Purchase of Energy Saving Equipment and Alternate Energy Source**
 As an energy saving initiative, non-working old tube lights of Labs, class room, passages, toilet blocks, administrative office, cabins etc. are replaced with LED lights. Institute required many computers, printers, projectors, lab equipment etc. for academic and office purposes. Mostly electronic items are consume the major energy. So while purchasing the power operated electronic items, institute always try to give priority to energy saving equipment.

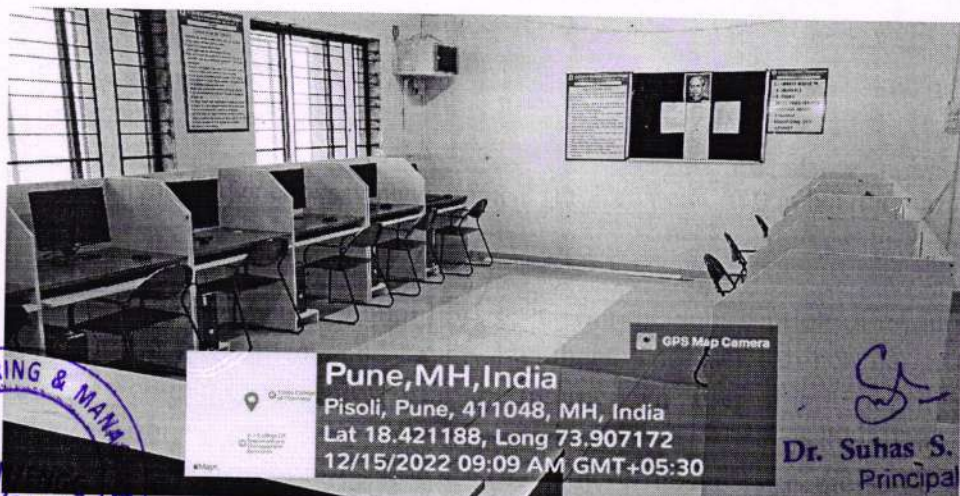
Rooftop solar power generation system installed in the campus. The electricity generated from this system is supplies to main grid of campus and from that main grid K J College of Engineering and Management Research received the electricity.



LED lights and energy saving equipment (Projector and AC) in board room

7. **Digital Library**

KJCOEMR is equipped with a digital library, having the subscription of e-journals and e-books useful for the students and faculty members. The user can get the information on his/her own computer screen by using the Internet. The user of a digital library need not go to the library physically. Round the clock access is possible if an internet connection available. Multiple users can access the e-resources at the same time. No need of printing many books or take out prints of journals. 24 X 7 availability of e-resources helps to save papers and avoid the wear and tear of books.

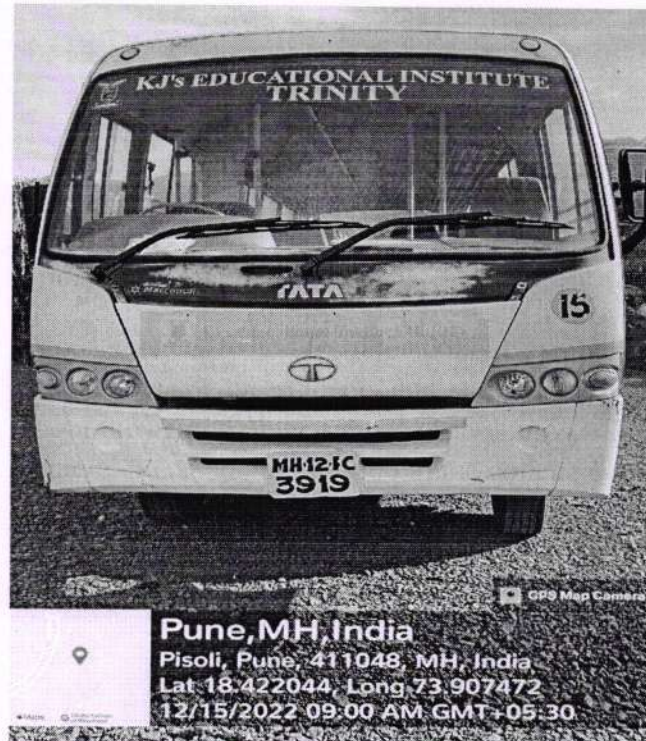


Digital library

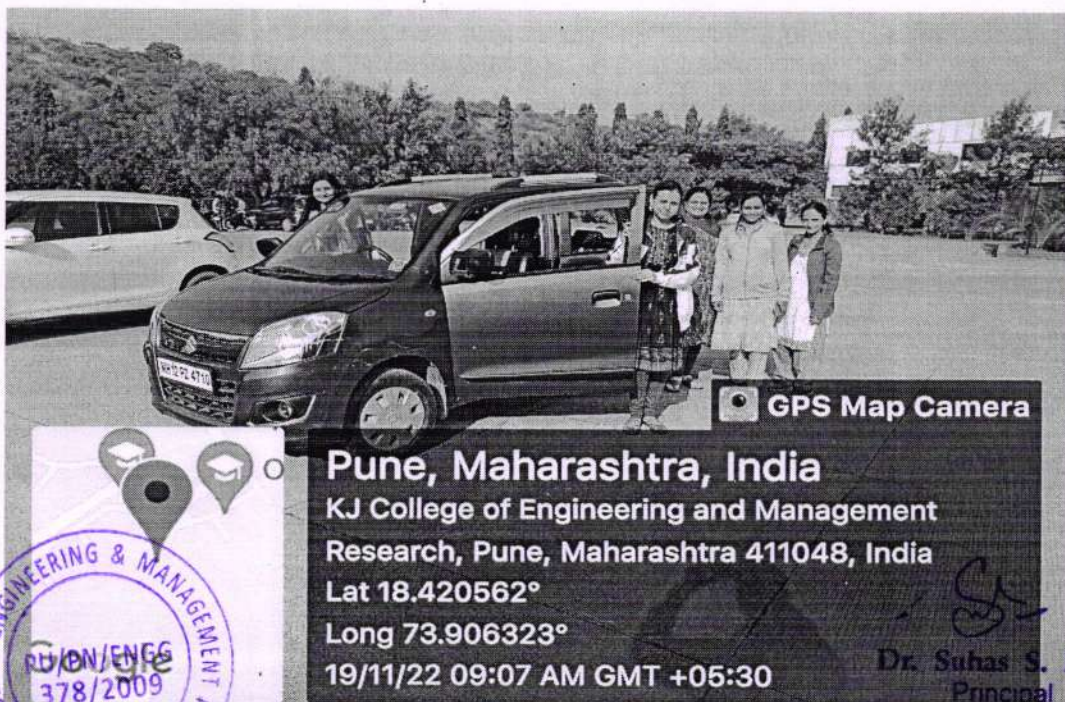
Dr. Suhas S. Khot
 Principal
KJ College of Engineering & Management Research
 Sr. No. 25 & 27, Kondhwa-Saswad Road
 Bopdev Ghat, Pune - 411 008

8. Use of Public Transport and Carpooling

The institute provides bus services to and from the college campus and different parts of Pune. The service is available for the students and staff of the institute. Institute also encourages staff to adopt the carpooling system. Carpooling is a smart way to commute by sharing just one vehicle. It can avoid pollution in the college campus as well as in the city by reducing the usage of vehicles.



Buses for transport



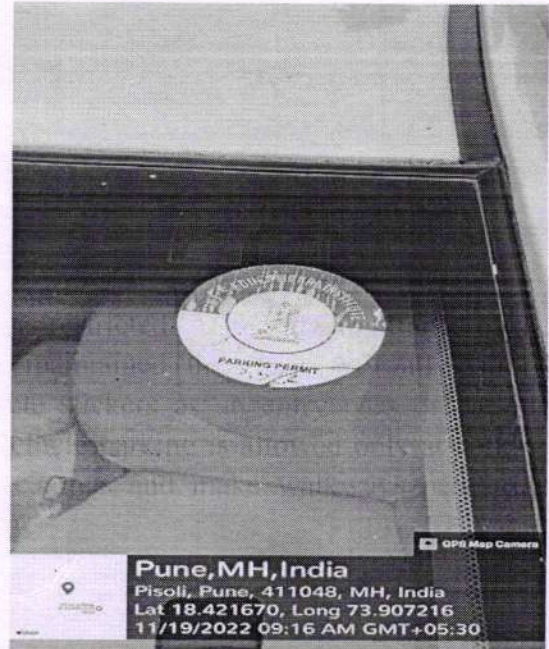
Faculty member of KJCOEMR using pool car

KJ College of Engineering & Management Research

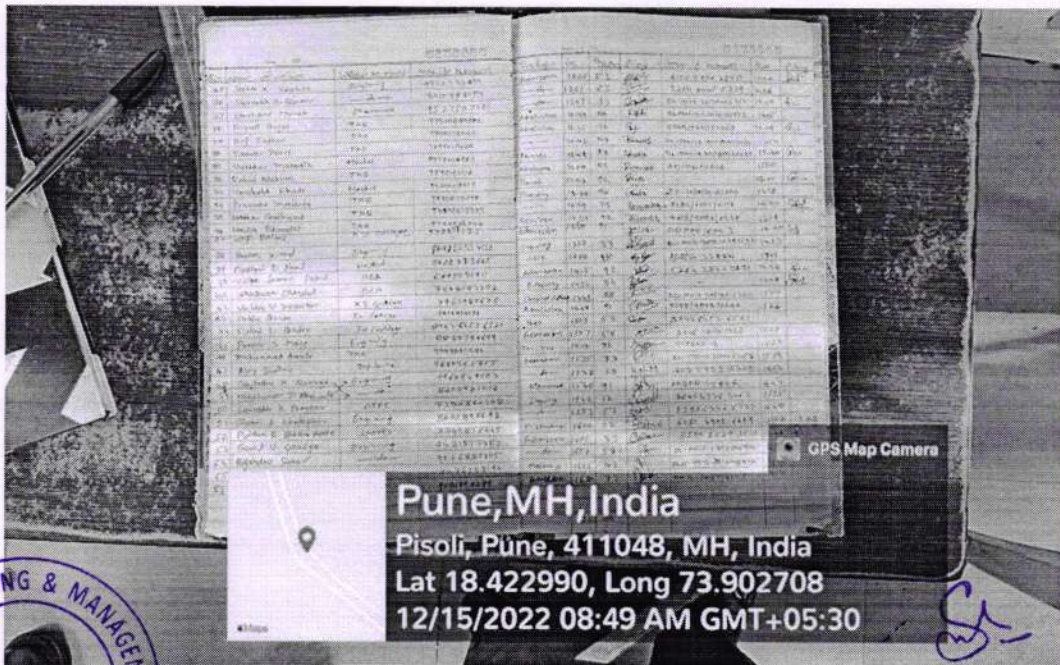
Sr. No. 25 & 27, Kondhwa-Saswad Road,
Bundev Ghat, Pune - 48.

9. Restricted Entry of Vehicle and Parking

In the KJCOEMR campus, entry of vehicles is restricted. At the main entrance of the college campus, visitors entry register has maintained the records of all visitors. Authorities at KJCOEMR have issued vehicle stickers as an entry pass or parking permit to the employees for their vehicles. Vehicle parking is allowed only at parking spaces. It helps to reduce the pollution in campus and make walkways pedestrian friendly.



Vehicle stickers as an entry pass

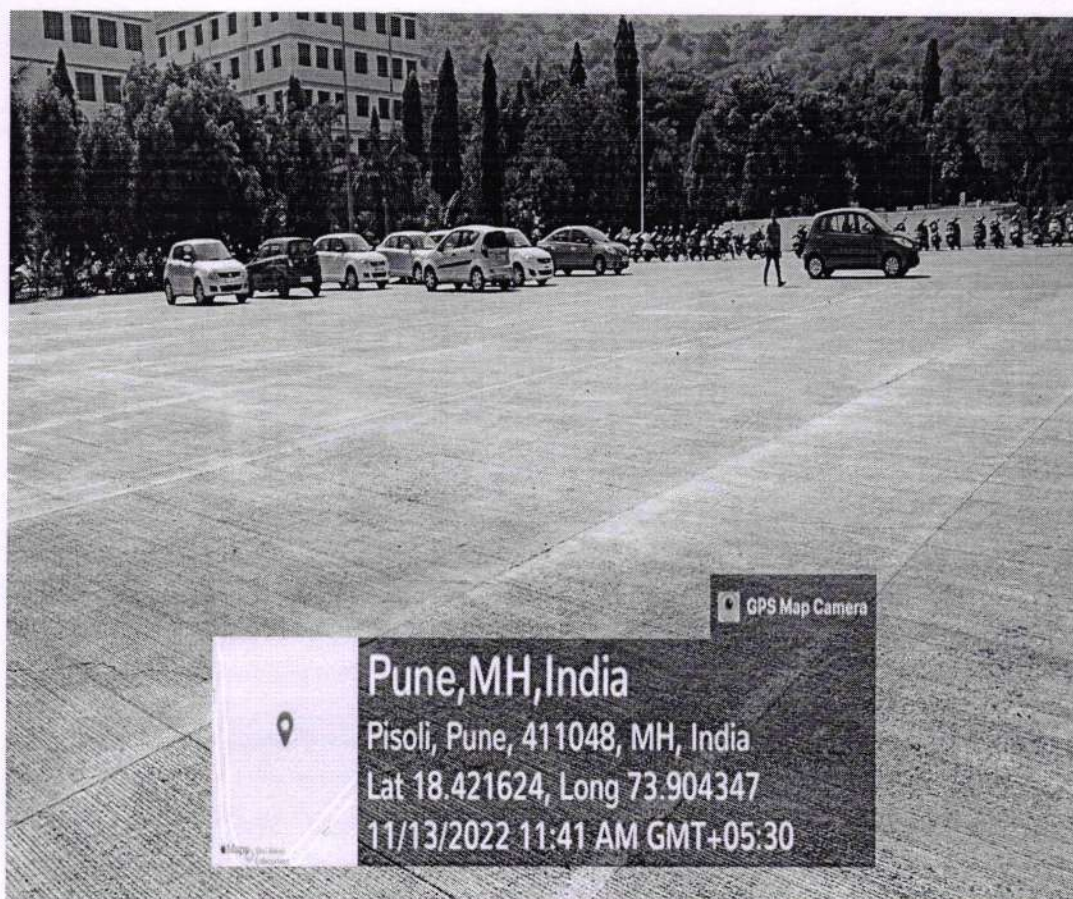


Visitors' register at main entrance of campus

Dr. Suhas S. Khot
Principal

K J College of Engineering & Management Research
Sr. No. 25 & 27, Kondhwa-Saswad Road
Bajirao Chit, Pune - 48





Vehicle Parking

10. Minimum Use of Paper


All office notices and information are displayed through the mail and WhatsApp Groups as much as possible. High speed Wi-Fi facility is also provided for this. Other practices follow like re-use of the one-sided paper for notes, sketches, rough work and print outs etc.

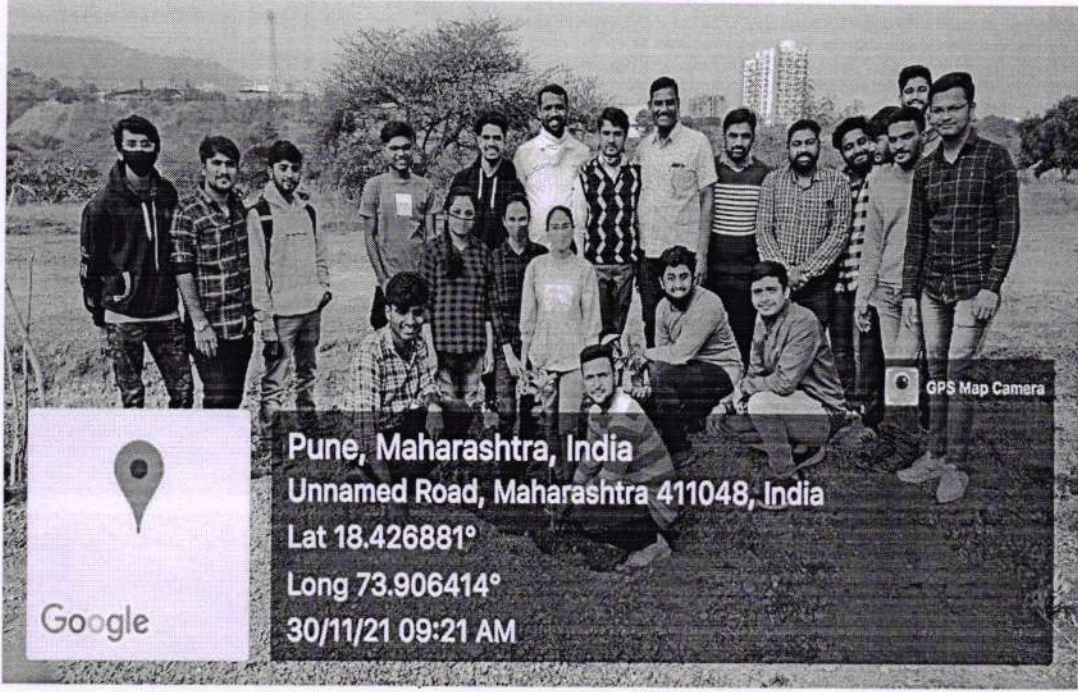
11. Tree Plantation

The campus is beautifully landscaped with trees and plants. Exotic fruit trees are also planted in the campus. Tree plantation is very necessary because trees provide oxygen to the environment and make the air quality better. If more trees are planted, then the world's environment will become a safer place to live in. Tree plantation also reduces pollution, thus making the life of future generations secure. KJCOEMR always take initiative in tree plantation activities.

For example, NSS, KJCOEMR in coordination with Lions Club, Pune & Rajput Samaj Seva Vikas Manch has organised a Tree Plantation activity under “Mazi Vasundhara Abhiyan” on 30th November 2021 at KJ’s Educational Institute.



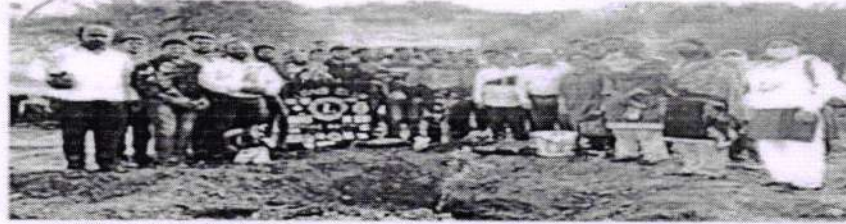

Dr. Suhas S. Khot
Principal
K J College of Engineering & Management Research
Sr. No. 25 & 27, Kondhwa-Saswad Road,
Bondev Ghat Pune - 48



Student and Staff of KJCOEMR planting the trees

लोकमंथन

के.जे. शैक्षणिक संस्थेतर्फे माझी वसुंधरा अभियानांतर्गत वृक्षारोपण



पुणे/प्रतिनिधी : आज संपूर्ण जग प्रदूषणाच्या विळख्यात अडकून वातावरणीय बदलाचे विविध परिणामास सामोरे जात आहे. पर्यावरणाचा समतोल राखणे तसेच वायू प्रदूषण कमी करण्यासाठी महाराष्ट्र शासनाने माझी वसुंधरा या अभियानास सुरुवात केली आहे. कोंढवा येथील के.जे. शैक्षणिक संस्थेचे संस्थापक अध्यक्ष कल्याण जाधव सर यांच्या मार्गदर्शनाखाली शैक्षणिक संस्थेचा परिसर विविध प्रकारची औषधी वनस्पती, फळांची वृक्षे लावून निसर्गरम्य तसेच हिरवागार आहे. तरी या अभियानांतर्गत के.जे. शैक्षणिक संस्थेचे ट्रिनिटी अभियांत्रिकी व संशोधन महाविद्यालय आणि के.जे. अभियांत्रिकी महाविद्यालयातील राष्ट्रीय सेवा योजना, विद्यार्थी विकास मंडळ, लायन्स क्लब पुणे आणि राजपूत समाज सेवा विकास मंच यांच्यामार्फत महाविद्यालयात

वृक्षारोपण करण्यात आले.

यात आंबा, पेरू, चिंच, जांभूळ, सीताफळ ई. विविध प्रकारचे वृक्षांची रोपे लावण्यात आली. सदरील उपक्रमास के.जे. शैक्षणिक संस्थेचे संचालक डॉ. व्यासराज काखंडकी, प्राचार्य डॉ. अभिजित औटी, रासेयोचे कार्यक्रम अधिकारी प्रा. जितेश धुळे, प्रा. संदीप सहाणे, विद्यार्थी विकास अधिकारी प्रा. शरद भोसले, सहकार्यक्रम अधिकारी रणजित शितोळे, वाळासाहेब बडदे, लायन्स क्लबचे मुनील चेकर, सौ. प्राज्ञा माने व राजपूत समाज सेवा विकास मंचाचे अध्यक्ष सुभाष परदेशी, सौ. हेमलता परदेशी उपस्थित होते.

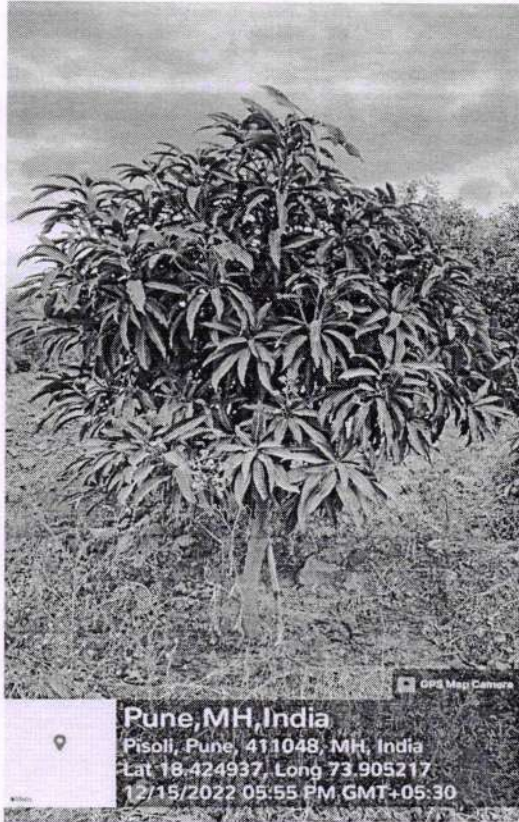
यात ट्रिनिटी अभियांत्रिकी व संशोधन महाविद्यालय आणि के.जे. अभियांत्रिकी महाविद्यालयातील रासेयो स्वसेवकांनी सहभाग नोंदविला.

Pune Edition
Dec 10, 2021 Page No. 3



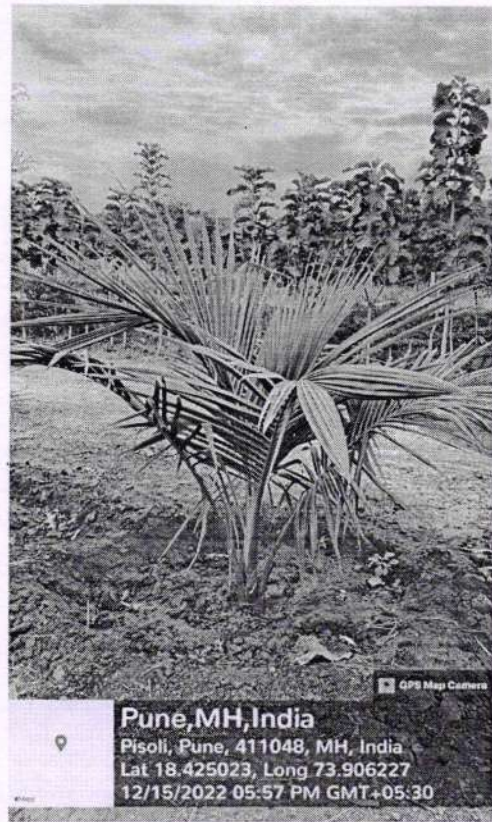
Tree plantation activity news published in news paper **Dr. Suhas S. Khot**
Principal

K J College of Engineering & Management Research
Sr. No. 25 & 27, Konchwa-Saswad Road
Rajdev Ghat, Pune - 48.



Pune, MH, India
 Pisoli, Pune, 411048, MH, India
 Lat 18.424937, Long 73.905217
 12/15/2022 05:55 PM GMT+05:30

Mango Tree



Pune, MH, India
 Pisoli, Pune, 411048, MH, India
 Lat 18.425023, Long 73.906227
 12/15/2022 05:57 PM GMT+05:30

Coconut Tree



Pune, MH, India
 Pisoli, Pune, 411048, MH, India
 Lat 18.422164, Long 73.907273
 12/15/2022 05:48 PM GMT+05:30

Sapodilla Tree



Pune, MH, India
 Pisoli, Pune, 411048, MH, India
 Lat 18.424947, Long 73.905680
 12/15/2022 05:56 PM GMT+05:30

Tamarind Tree



Dr. Suhas S. Khot

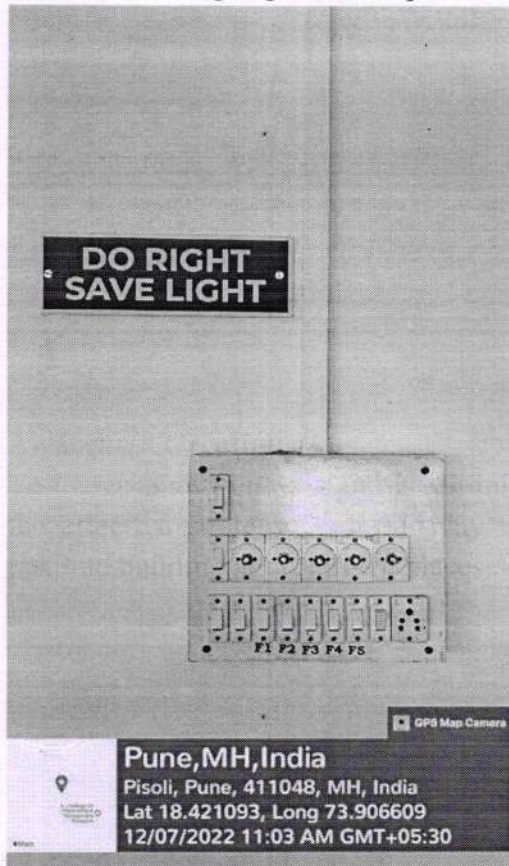
Dr. Suhas S. Khot
 Principal

**K J College of Engineering &
 Management Research**

Sr. No. 25 & 27, Kondhwa-Saswad Road
 Shivajinagar Ghat, Pune - 48.

12. Awareness Creation

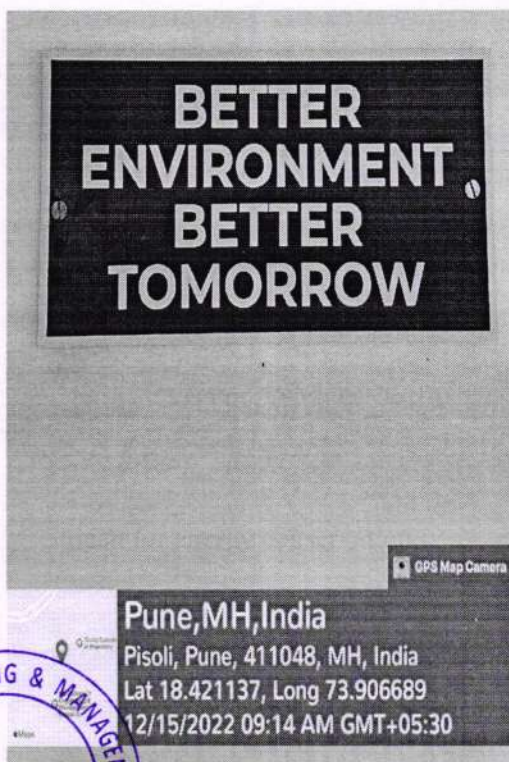
To increase awareness about green initiatives among the students and staff of institute the effective strategy is the display the slogans. These slogans are displayed in the institute building at prominent places.



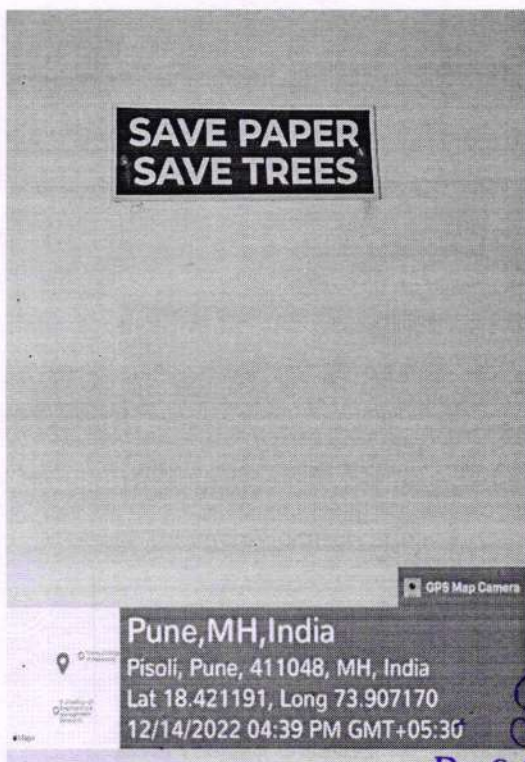
Slogan for energy conservation



Message for energy conservation



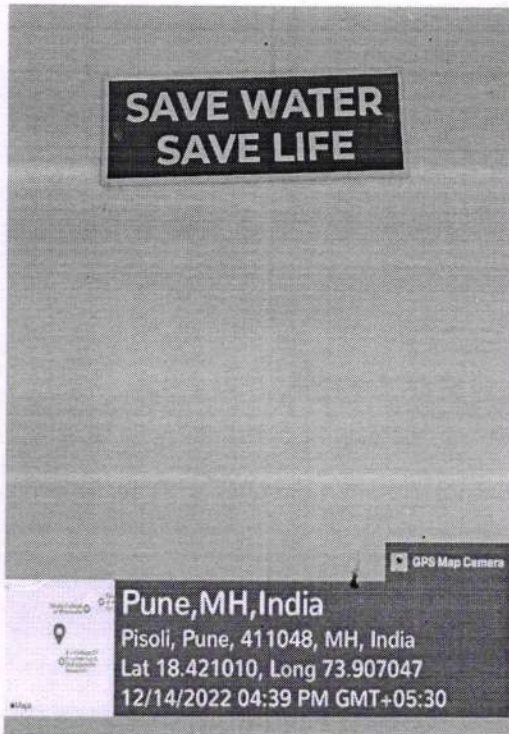
Slogan for save environment



Slogan for reduce paper use



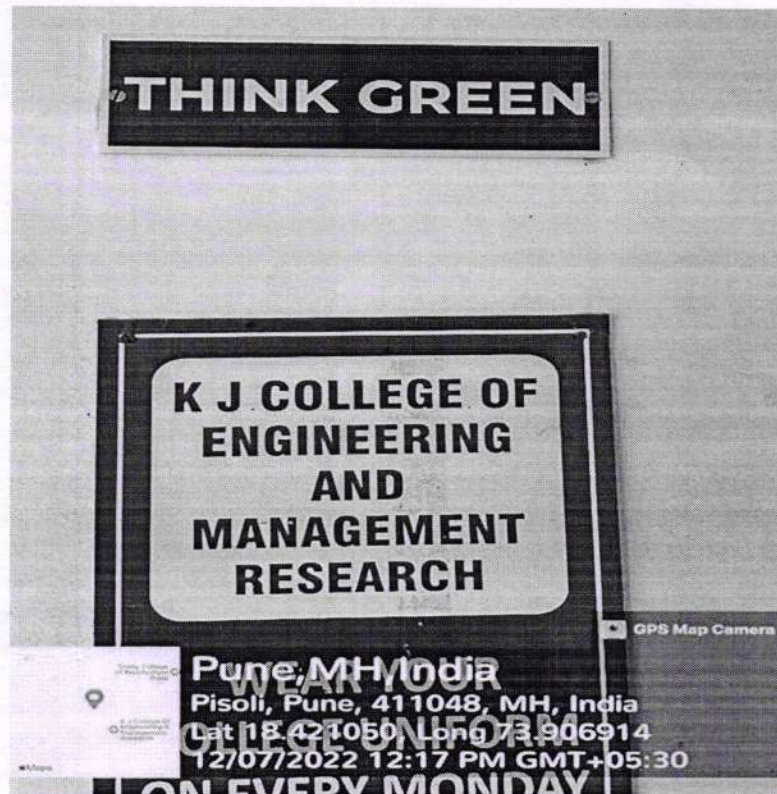
Dr. Suhas S. Khot
Principal
K J College of Engineering & Management Research
Sr. No. 25 & 27, Kondhwa-Saswad Road,
Bordev Ghat, Pune - 48.



Slogan for water conservation



Slogan for reduce plastic use



Slogan for adopt green practices



[Signature]
Principal
(KJCOEMR Pune)



K J's Educational Institute

K J College of Engineering and Management Research

Sr. No.25 & 27, Pisoli At Tal-Haveli, Dist-Pune

Brief Report of 7.1.2.5 THE INSTITUTION HAS FACILITIES AND INITIATIVES FOR DISABLED FRIENDLY, BARRIER FREE ENVIRONMENT

K J College of Engineering and Management Research provides an accessible environment that allows people with disabilities to move safely and freely also use the facilities within the built environment. The environment supports the independent functioning of individuals so that they can participate in day to day activities.

Policy for disabled friendly environment and barrier free environment

Institute drafted a policy for disabled friendly environment is in accordance with right of persons with disability act 2016 that prohibits discrimination against individual with physical and mental disabilities.

Objective of the policy

- a) To prohibit discrimination against individual with physical and mental disability.
- b) To provide an environment of teaching learning process with student having disability.
- c) To decide the examination policy for disabled students.

The college provides various provisions to create disable friendly environment.

RAMPS / RAILS/LIFT/WHEEL CHAIR/SIGNAGE BOARD/RESTROOM/ SOFTWARE SHOULD INCLUDE SPECIFIC REQUIREMENT OF DIVYANGJAN FOR THEIR USE

Following are the specific facilities to meet the requirement of Divyangjan for their use.

1. Ramp

Along with steps sloped ramp with metal railing were constructed at the entrance of institute. The ramp designed as per the specifications required for people with different abilities. Toilets having offset also provided the ramp. The ramps provide convenience to the disabled students and prevent tripping accidents. Ramp ensures easy and safe movement in college of Divyangjan with wheelchair. Divyangjan can choose to use the ramp when they do not feel comfortable using the stairs.

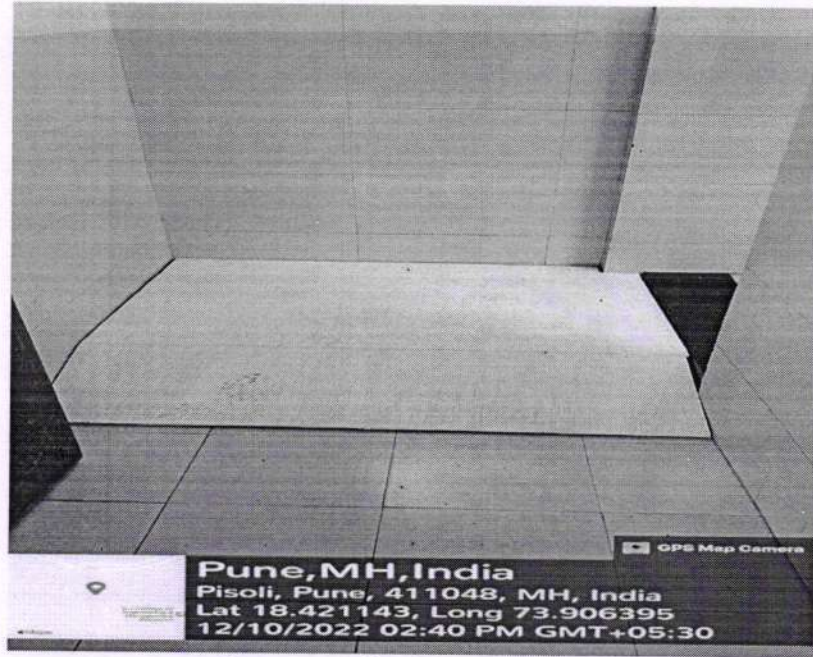


Ramp with metal railing at the entrance



Dr. Suhas S. Khot
Principal

K J College of Engineering & Management Research
Sr. No. 25 & 27, Kondhwa-Saswad Road
Ropdev Ghat. Pune - 48-



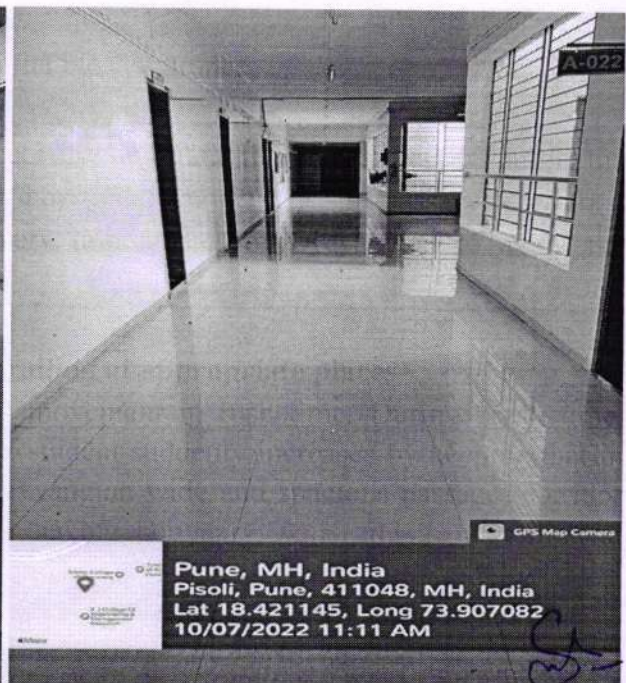
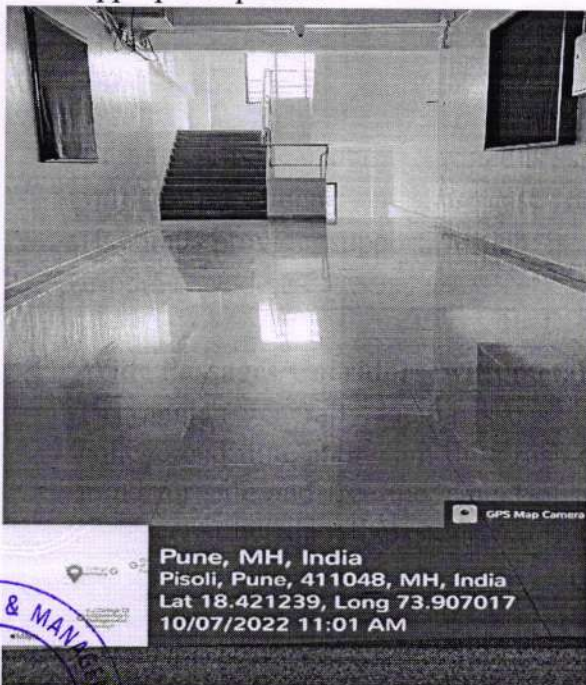
Ramp at toilet block entrance

2. Rails

Railings provide stability, which is especially important to increase safety during the vertical movement on stair case or horizontal movement in passages/corridors. Handrails provide support, which is very importance for Divyangjan to avoid the tripping accidents .

Wide Passages/Corridors with metal railing at appropriate places

Divyangjan generally facing issues for movement in rush time. During break time, college end time and exam time rush of student suddenly increases by keeping that in mind for safe and free movement of Divyangjan wide and spacious passages/corridor were constructed. All passages/corridor having boundary walls and metal railing at appropriate places.



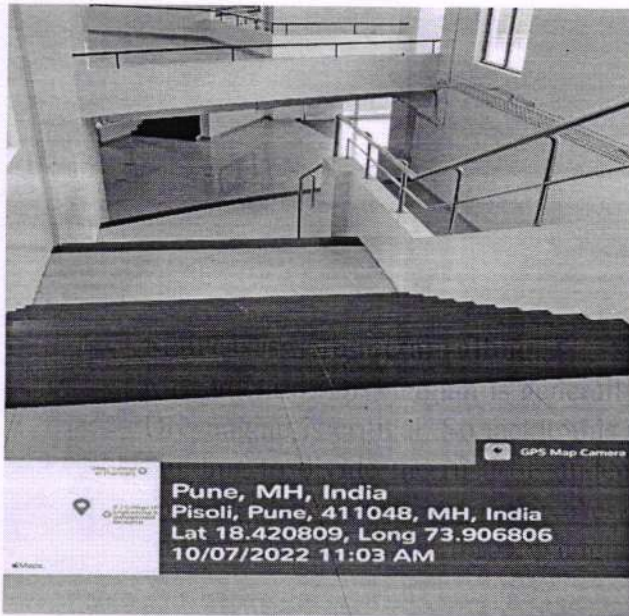
Wide and spacious passages/corridors boundary walls and metal railing at appropriate places

Dr. Suhas S. Khot
Principal

K J College of Engineering
Management Research
Sr. No. 25 & 27, Kondhwa-Saswad Rd.

Staircases with metal railing

Movement of Divyangjan is generally slow, so at the time of emergency evacuation of Divyangjan is critical. So tackle this two staircases were constructed at two side of the building to divide the rush of students. Immediate evacuation can possible in case of any emergency due to two staircases. Staircase are wide and having metal metal railing which make them safer for Divyangjan.



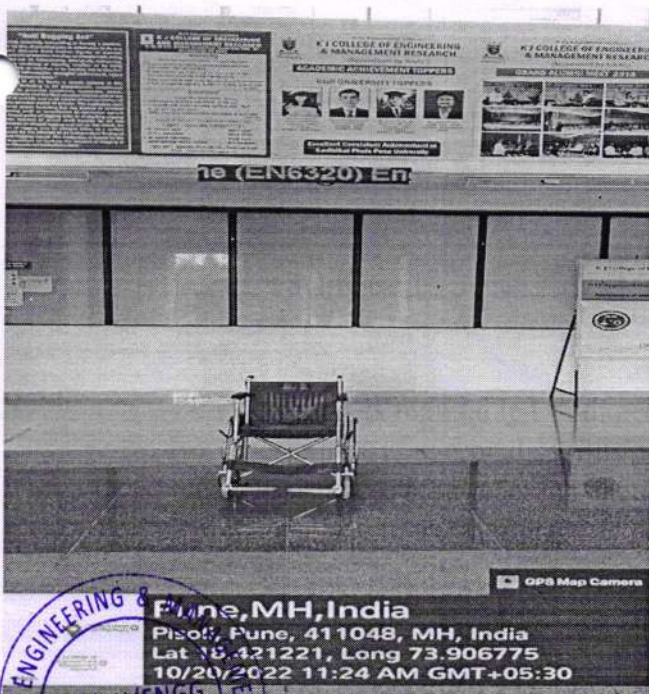
Staircase 1



Staircase 2

3. Wheel Chair

A wheelchair is maintained in the college. When walking is difficult or impossible due to illness, injury, age or disability to the student, staff or visitor, institute has a wheel chair assistance. Non-teaching faculty is available for the moment of disabled person from one place to another place as per the requirement.



Wheel chair facility



4. Signage Boards

For partially blind or low vision people, bright sign boards printed in a easily visible font size are displayed in the institute. It guides them to access the facilities and places in the campus.

In Institute generally we required following signage boards.

a. Directional Signage: Gives the hint of direction with regard to different facilities in buildings, classrooms and other offices.

b. Informational Signage: Gives the needed information regarding The location of the classrooms and other infrastructural facilities.

c. Identification Signage: Gives the exact note on identifying the building/ classroom/ other rooms and facilities

**WAY TO
ADMISSION
COUNSELLING** →

दूरध्वनी क्रमांकः
020-24401222
020-24401204

सावित्रीबाई फुले पुणे विद्यापीठ
(पूर्वेचे पुणे विद्यापीठ)

परीक्षा समन्वय विभाग
पुणे-४११ ००७
website: www.unipune.ac.in
e-mail: coe@unipune.ac.in

परिपत्रक क्रमांक : २५७

विषय : परीक्षा सुरु होण्यापूर्वी अर्धा तास अगोदर परीक्षार्थींनी परीक्षा केंद्रावर उपस्थित राहणे व परीक्षा हॉलमध्ये कोणतेही इलेक्ट्रॉनिक्स गॅजेट घेऊन जाण्यास बंदीबाबत .

या परिपत्रकाद्वारे सर्व संलग्न महाविद्यालयांचे प्राचार्य/मान्यताप्राप्त संस्थांचे संचालक /विद्यापीठातील शैक्षणिक विभागांचे विभागप्रमुख यांना कळविण्यात येते की, विद्यापीठ अधिकार मंडळाने घेतलेल्या निर्णयानुसार कळविण्यात येते की, राष्ट्रीय पात्रता प्रवेश परीक्षेच्या धर्तीवर (NEET) विद्यापीठ परीक्षेतील गैरप्रकारांना आळा घालण्यासाठी सन २०१७ च्या द्वितीयांर्थातील परीक्षांपासून खालील उपाययोजना अंमलात येतील .

१. परीक्षार्थींनी परीक्षा सुरु होण्याच्या नियोजित वेळेपूर्वी अर्धा तास अगोदर परीक्षा केंद्रावर उपस्थित राहणे आवश्यक आहे .
२. परीक्षा सुरु झाल्यानंतर कोणत्याही परिस्थितीत परीक्षार्थींना परीक्षा हॉलमध्ये प्रवेश देण्यात येणार नाही .
३. परीक्षार्थींना भ्रमणध्वनी (Mobile Phone) किंवा कोणतेही इलेक्ट्रॉनिक्स /आधुनिक संदेशवहन उपकरणे घेऊन परीक्षा हॉलमध्ये प्रवेश देण्यात येणार नाही .

Pune, MH, India
Pisoli, Pune, 411048, MH, India
Lat 18.421235, Long 73.907120
01/24/2023 11:07 AM GMT+05:30

निर्देशनाम आणत झाल्यात व त्यांचे काटेकोरपणे पालन होईल याची योग्य खबरदारी घ्यावी .

Directional signage board of way to admission counselling

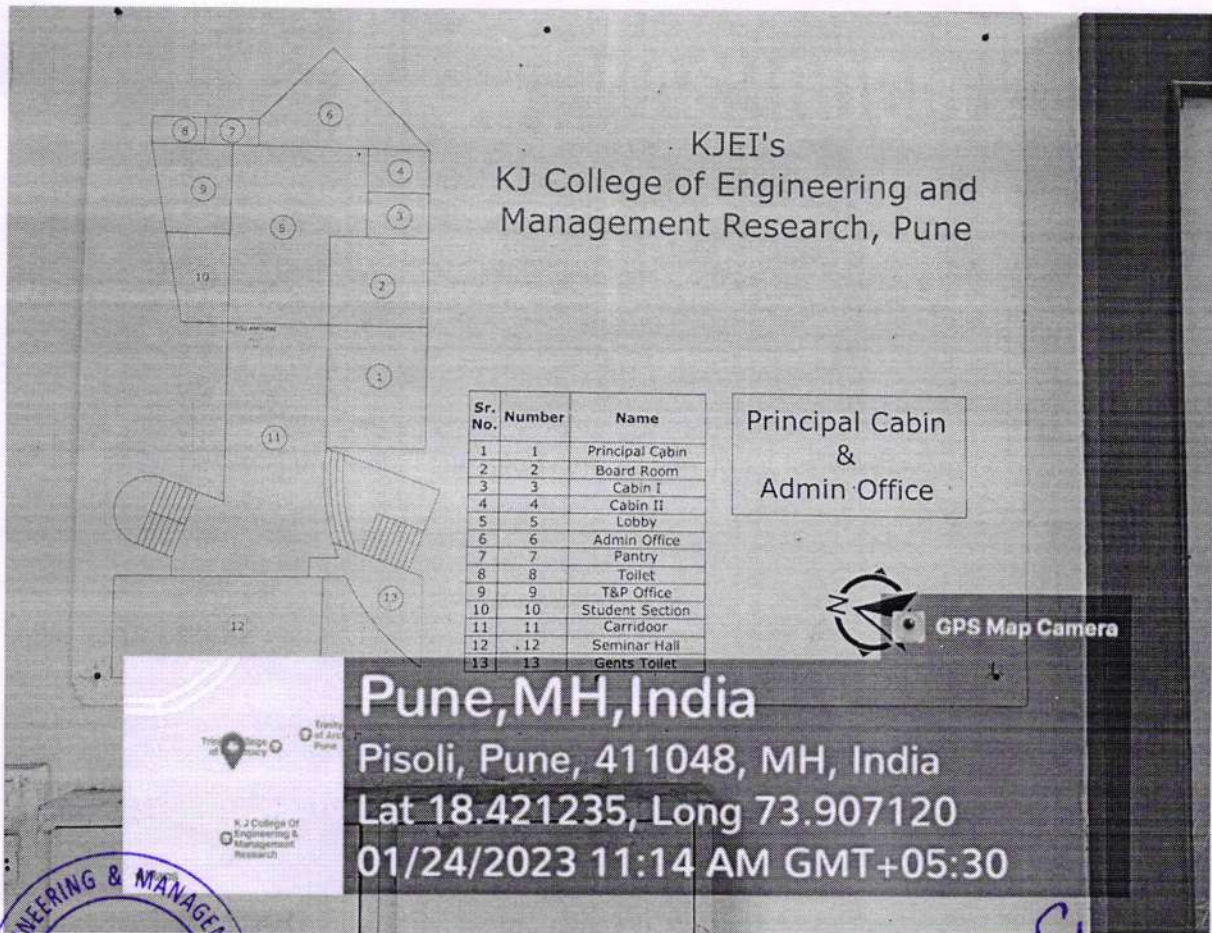


Dr. Suhas S. Khot
Principal

K J College of Engineering &
Management Research
Sr. No. 25 & 27, Kondhwa-Saswad Road
Brodav Ghat, Pune - 48.



Directional signage board of way to ladies washroom

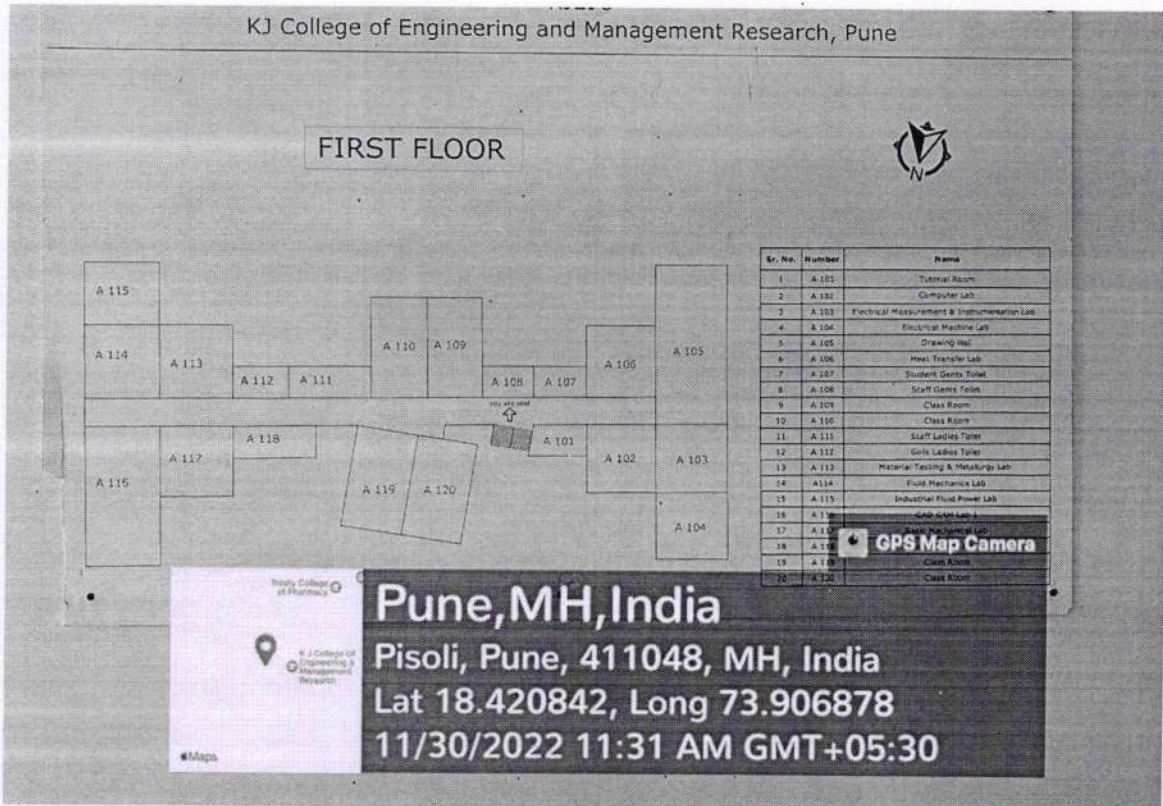


Information signage board of ground floor

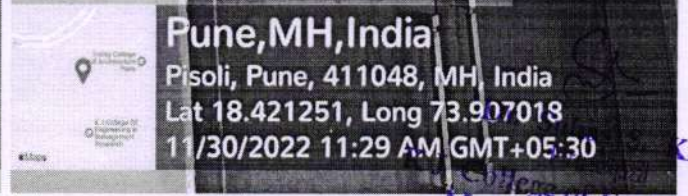
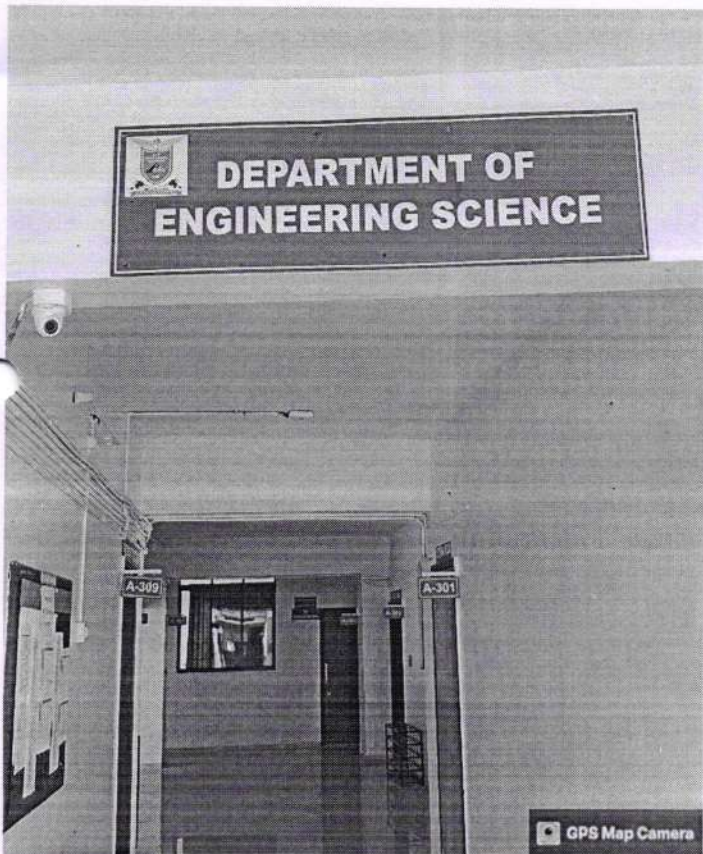


Suhas S. Khot

Dr. Suhas S. Khot
Principal
KJ College of Engineering & Management Research
Sr. No. 25 & 27, Kondhwa-Saswad Road,
Bundev Ghat, Pune - 48.

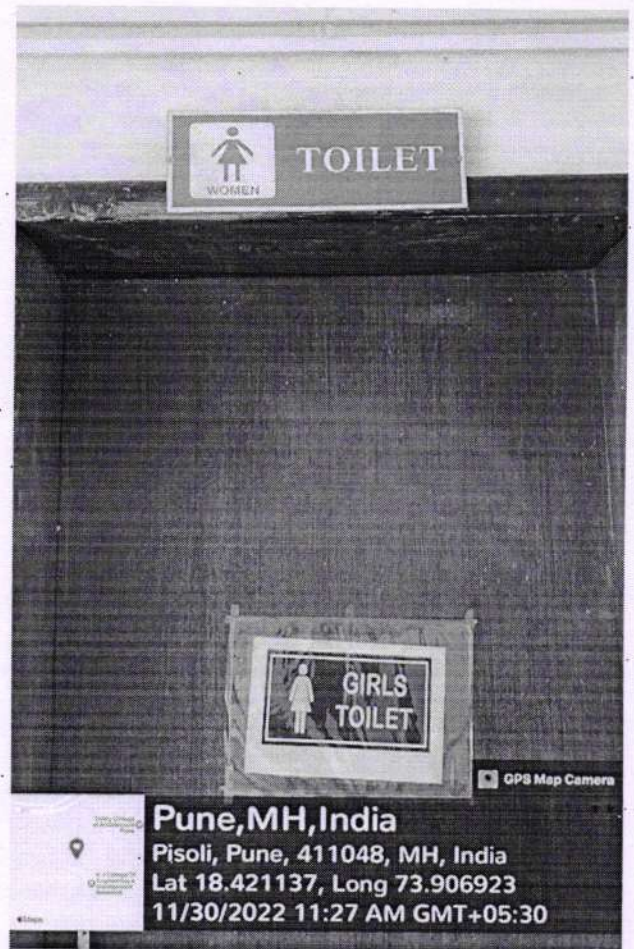


Information signage board of first floor



Identification signage board of department/labs/cabins/class-





Identification signage board of male and female toilet



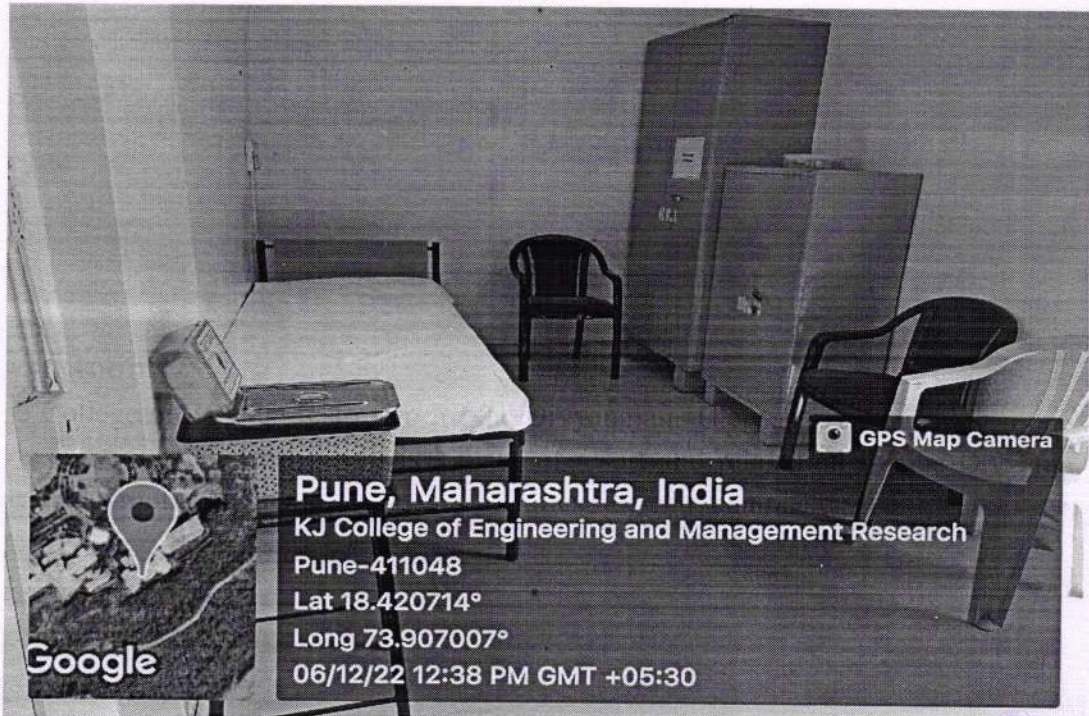
Safety Signage board for safety , CCTV Surveillance



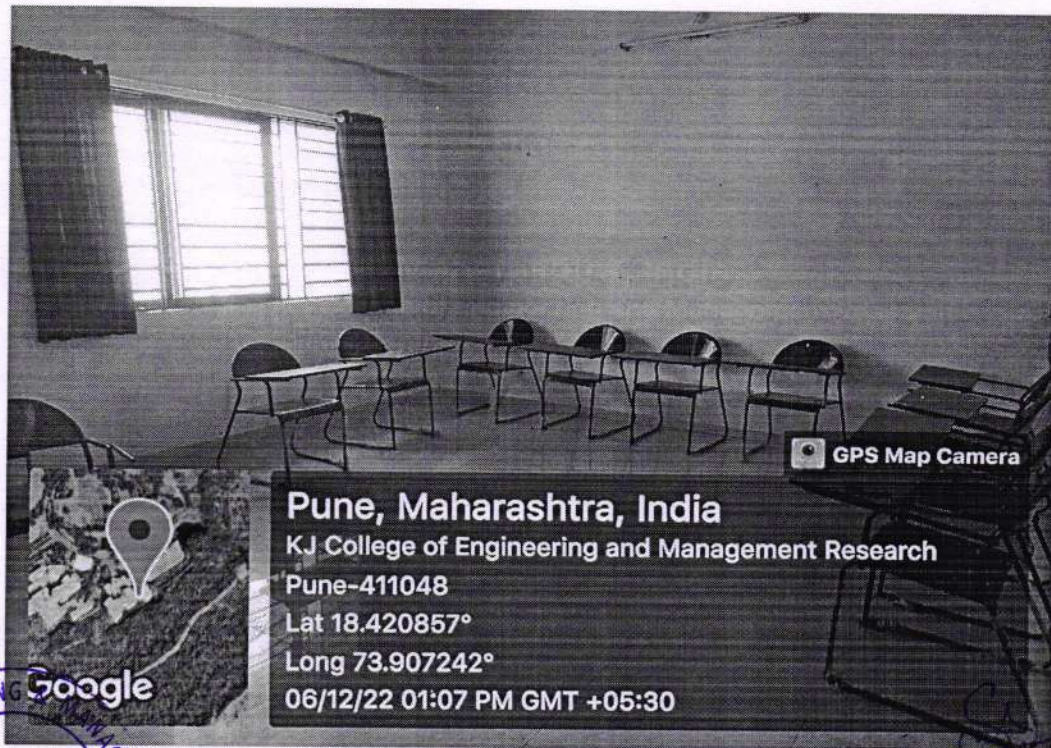
Dr. Suhas S. Khot
Principal
K J College of Engineering &
Management Research
Sr. No. 25 & 27, Kondhwa-Saswad Road
Bondev Ghat, Pune - 48.

5. Rest Room

The College provided a rest room for the Divyangjan. There is a separate rest room for girls and boys. The rest Room is a place of resort and relaxation for the Divyangjan. These rest rooms having all necessary facilities like bed, chairs etc.



Rest room for girls



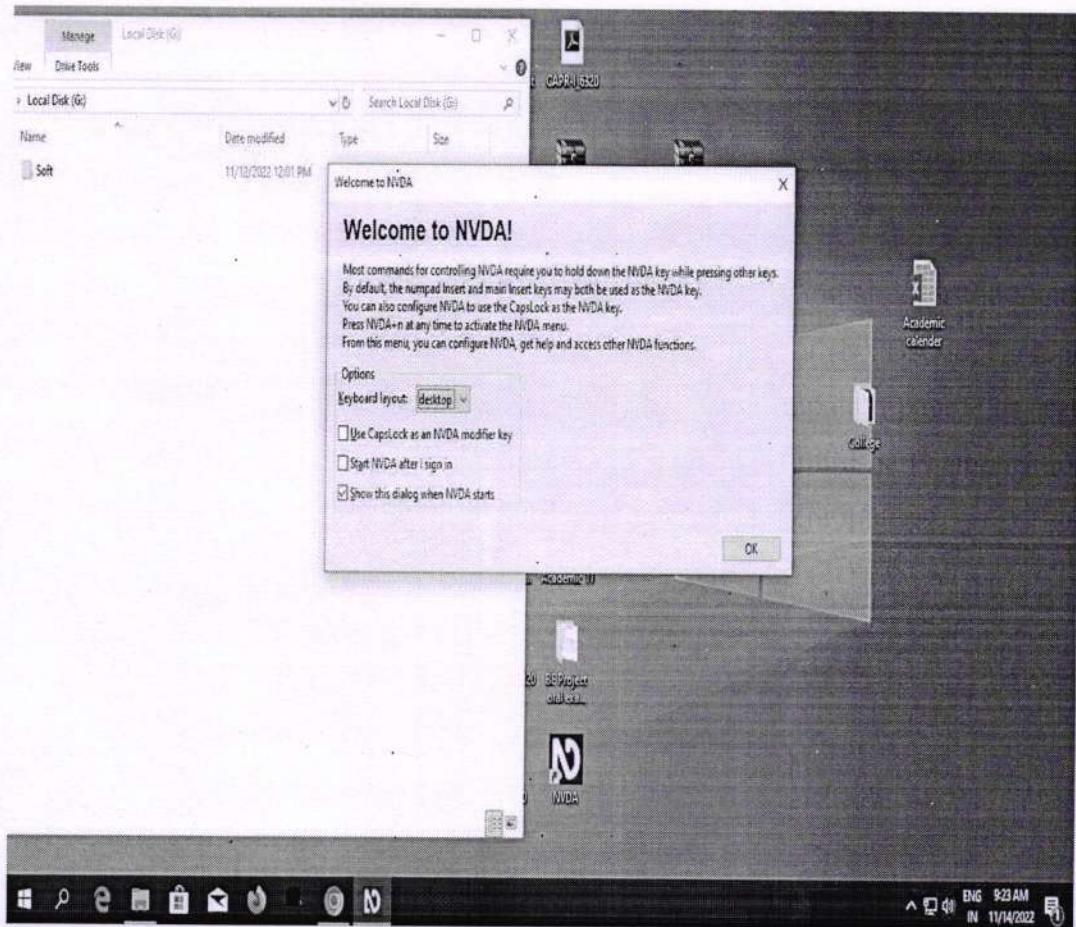
Rest room for boys



Dr. Suhas S. Khot
Principal
KJ College of Engineering &
Management Research
27, H. B. Thwa-Saswad Road
Pune - 48.


6. Screen Reader Software

Screen reader is an assistive software which helps the visually impaired or the blind to work with computer. In every lab Non Visual Desktop Access (NVDA) open source software has been installed. NVDA allows blind and vision impaired people to access and interact with the Windows operating system and many third-party applications. With the help this disabled can do the activities on internet and computer.



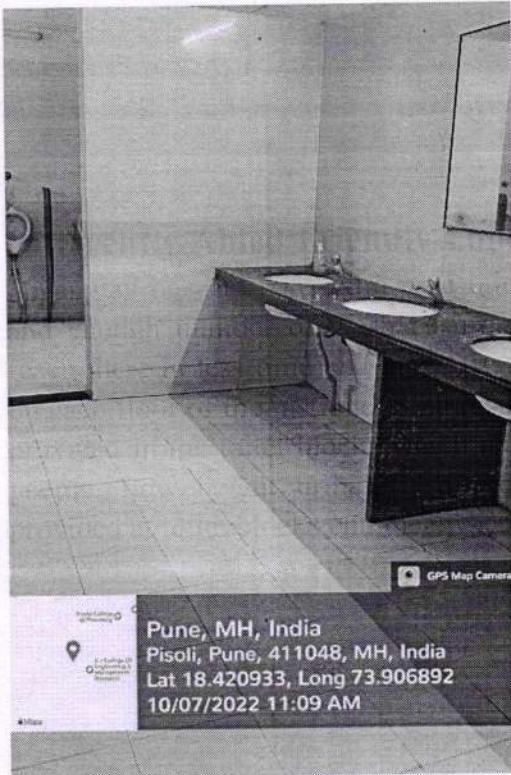
Screen reader software




Dr. Suhas S. Khot
Principal
K J College of Engineering &
Management Research
Sr. No. 25 & 27, Kondhwa Saswad Road,
Pune - 411 004

7. Differently Aabled Friendly Toilet Blocks

Diyangjan need to take extra precautions in toilet blocks . Toilets blocks are spacious and enough number of wash basins, urinals and toilets are available so Divyangjan reach there in less time and move freely. Minimum two toilet blocks were constructed on each floor of the institute. Skid resistant flooring, urinals and western commodes are provided in the toilet blocks which make toilet blocks user friendly to differently able people. Low height urinals also provided which are useful to dwarf. Ramps are provided at toilet blocks entrance wherever required.



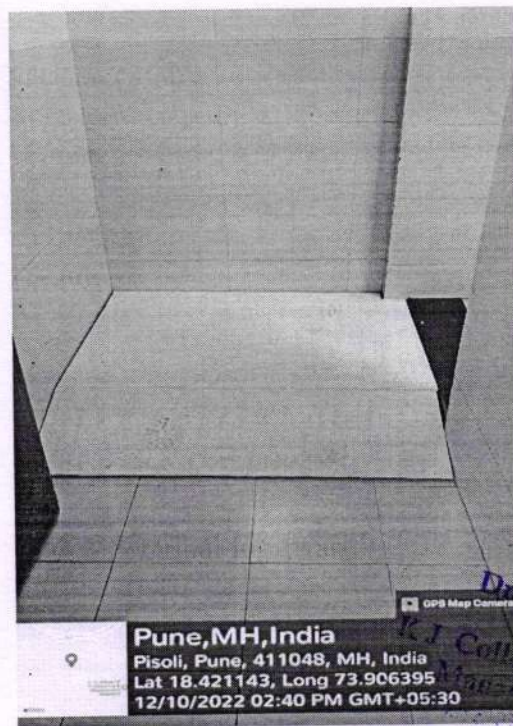
Skid resistant flooring



Urinal for dwarf



western commode



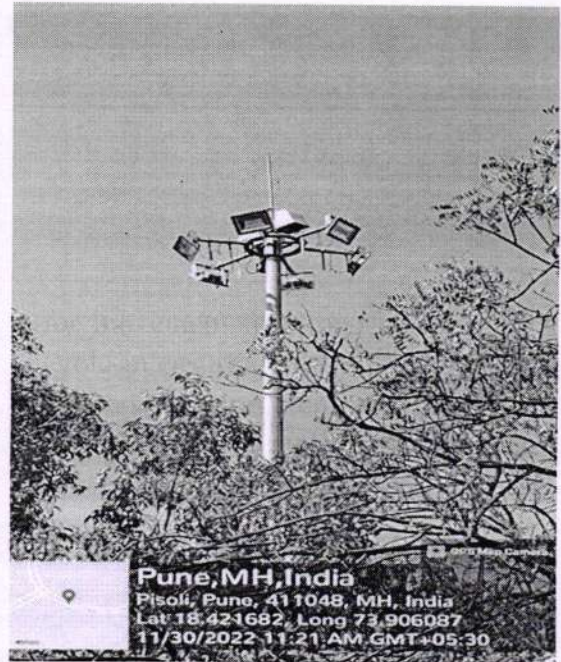
Ramp at toilet block entrance



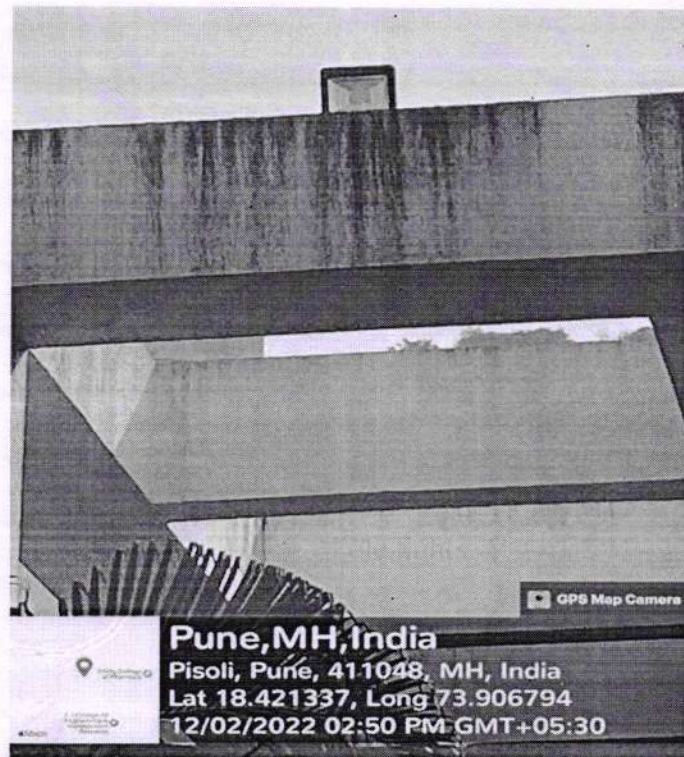
Suhas S. Khot
Principal
K J College of Engineering & Management Research
Kondhwa-Gaswad Road
Pune - 411 048

8. Light Poles and Halogen Lamps

Visually impaired facing issues in low lights for movement from one place to other place in campus. Light poles play an important role in ensuring visually impaired can navigate dark roads, parking lots and walkways without any problem. By illuminating the campus, the poles will help to avoid accidents and injuries. Light poles and halogen lamps are installed at internal paths and key locations in the campus. It allows the safe movement during night time.



Pole lights



Halogen lamp

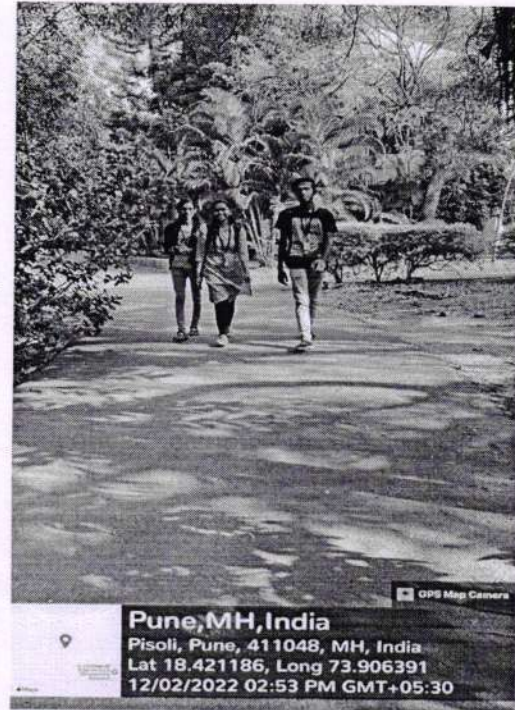



Dr. Suhas S. Khot
Principal

K J College of Engineering &
Management Research
No. 25 & 27, Kondhwa-Saswad Road
Bopdev Ghat, Pune - 48.

9. Pedestrian/ Divyangjan Friendly Walkways

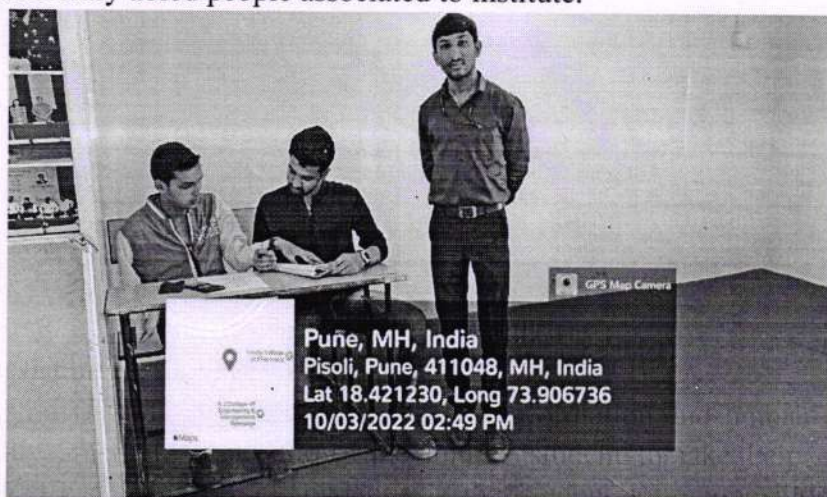
Walkways network were constructed in the college campus to connect different facilities like canteen, ground, parking area etc. Restricted entry of vehicle ensured the barrier free and safe movement of Divyangjan on these walkways.



Pedestrian friendly walkways


10. Personal Assistance

The administrative staff provides all the needed information and human assistance to the differently abled. Institute allows the injured student to take help of the writer during exam as per the university guidelines if that student not in a position to write. At institute level 'Physical disabled committee' has been formed to takes care the issues related to differently abled people associated to institute.



Hand injured student giving exam with the help of writer




Principal
(KJCOEMR Pune)